

## MAP3K2 (Phospho-Ser520) Antibody

Catalog No: #12516



Package Size: #12516-1 50ul #12516-2 100ul

Orders: [order@signalwayantibody.com](mailto:order@signalwayantibody.com)Support: [tech@signalwayantibody.com](mailto:tech@signalwayantibody.com)

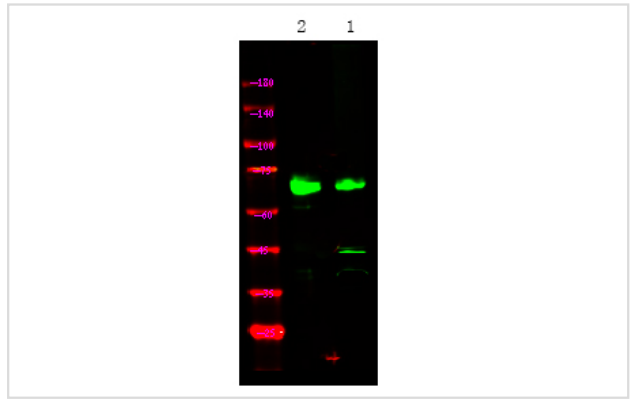
## Description

Product Name	MAP3K2 (Phospho-Ser520) Antibody
Host Species	Rabbit
Clonality	Polyclonal
Purification	Antibodies were produced by immunizing rabbits with synthetic phosphopeptide and KLH conjugates. Antibodies were purified by affinity-chromatography using epitope-specific phosphopeptide. Non-phospho specific antibodies were removed by chromatography using non-phosphopeptide.
Applications	WB
Species Reactivity	Hu Ms
Specificity	MAP3K2 (Phospho-Ser520) Antibody detects endogenous levels of MAP3K2 only when phosphorylated at Ser520
Immunogen Type	Peptide
Immunogen Description	A synthesized peptide derived from human MAP3K2 (Phospho-Ser520)
Target Name	MAP3K2
Modification	Phospho
Other Names	MAP3K2, MAP/ERK kinase kinase 2, MAPK/ERK kinase kinase 2, MAPKKK2, MEK kinase 2, MEKK 2, MEKK2, MEKK2B
Accession No.	Swiss-Prot#: Q9Y2U5NCBI Gene ID: 10746
Uniprot	Q9Y2U5
GeneID	10746;
Target Species	human
Calculated MW	70kd
Concentration	1.0mg/ml
Formulation	Liquid in PBS containing 50% glycerol, 0.5% BSA and 0.02% sodium azide.
Storage	Store at -20°C

## Application Details

Western blotting: 1:1000

## Images



Western Blot analysis of lysates of mouse liver, using primary antibody at 1:1000 dilution.

Note: This product is for in vitro research use only