

RXR- α (Phospho-Ser260) Antibody

Catalog No: #12554



Package Size: #12554-1 50ul #12554-2 100ul

Orders: order@signalwayantibody.comSupport: tech@signalwayantibody.com

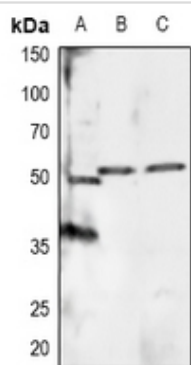
Description

| | |
|-----------------------|---|
| Product Name | RXR- α (Phospho-Ser260) Antibody |
| Host Species | Rabbit |
| Clonality | Polyclonal |
| Purification | Antibodies were produced by immunizing rabbits with synthetic phosphopeptide and KLH conjugates. Antibodies were purified by affinity-chromatography using epitope-specific phosphopeptide. Non-phospho specific antibodies were removed by chromatography using non-phosphopeptide. |
| Applications | WB |
| Species Reactivity | Hu Ms Rt |
| Specificity | RXR- α (Phospho-Ser260) Antibody detects endogenous levels of RXR- α only when phosphorylated at Ser260 |
| Immunogen Type | Peptide |
| Immunogen Description | A synthesized peptide derived from human RXR- α (Phospho-Ser260) |
| Target Name | RXR- α |
| Modification | Phospho |
| Other Names | RXRA, RXR-alpha, NR2B1, Retinoid X receptor alpha, Retinoid X receptor, alpha |
| Accession No. | Swiss-Prot#: P19793NCBI Gene ID: 6256 |
| Uniprot | P19793 |
| GeneID | 6256; |
| Target Species | human |
| Calculated MW | 51kd |
| Concentration | 1.0mg/ml |
| Formulation | Liquid in 0.42% Potassium phosphate, 0.87% Sodium chloride, pH 7.3, 30% glycerol, and 0.01% sodium azide. |
| Storage | Store at -20°C |

Application Details

WB (1/500 - 1/1000)

Images



Western blot analysis of RXR alpha (pS260) expression in Hela (A), mouse brain (B), rat brain (C) whole cell lysates.

Note: This product is for in vitro research use only