

Leptin Receptor (Phospho-Tyr986) Antibody

Catalog No: #12558



Package Size: #12558-1 50ul #12558-2 100ul

Orders: order@signalwayantibody.comSupport: tech@signalwayantibody.com

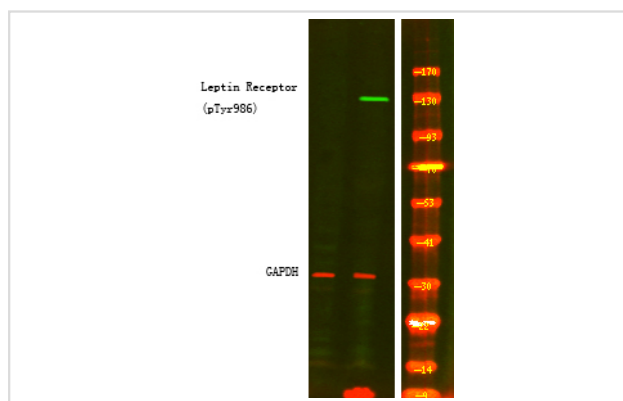
Description

Product Name	Leptin Receptor (Phospho-Tyr986) Antibody
Host Species	Rabbit
Clonality	Polyclonal
Purification	Antibodies were produced by immunizing rabbits with synthetic phosphopeptide and KLH conjugates. Antibodies were purified by affinity-chromatography using epitope-specific phosphopeptide. Non-phospho specific antibodies were removed by chromatography using non-phosphopeptide.
Applications	WB
Species Reactivity	Hu
Specificity	Leptin Receptor (Phospho-Tyr986) Antibody detects endogenous levels of Leptin Receptor only when phosphorylated at Tyr986
Immunogen Type	Peptide
Immunogen Description	A synthesized peptide derived from human Leptin Receptor (Phospho-Tyr986)
Target Name	Leptin Receptor
Modification	Phospho
Other Names	LEPR, CD295 antigen, HuB219, LEP-R, OB receptor, LEPRD, OB-R, OBR, CD295, DB, Leptin receptor
Accession No.	Swiss-Prot#: P48357NCBI Gene ID: 3953
Uniprot	P48357
GeneID	3953;
Target Species	human
Calculated MW	96kd
Concentration	1.0mg/ml
Formulation	Rabbit IgG in phosphate buffered saline (without Mg2+ and Ca2+), pH 7.4, 150mM NaCl, 0.02% sodium azide and 50% glycerol.
Storage	Store at -20°C

Application Details

Western blotting: 1:1000

Images



Western Blot analysis of lysates of HeLa cell (Left) and HeLa cell treated with 100ng/mL LPS for 30min (Right), using primary antibody at 1:1000 dilution.

Note: This product is for in vitro research use only