

## Ataxin-3 (Phospho-Ser256) Antibody

Catalog No: #12574



Package Size: #12574-1 50ul #12574-2 100ul

Orders: [order@signalwayantibody.com](mailto:order@signalwayantibody.com)Support: [tech@signalwayantibody.com](mailto:tech@signalwayantibody.com)

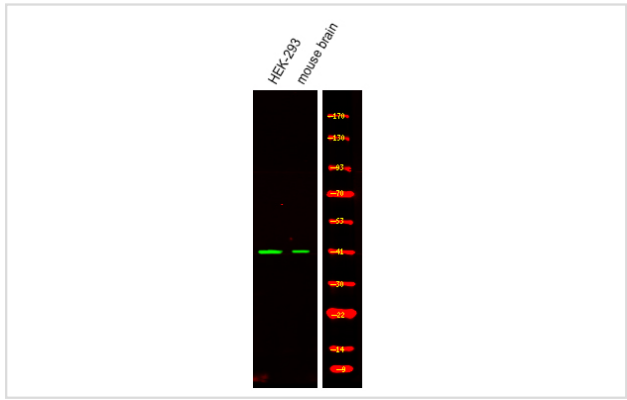
## Description

Product Name	Ataxin-3 (Phospho-Ser256) Antibody
Host Species	Rabbit
Clonality	Polyclonal
Purification	Antibodies were produced by immunizing rabbits with synthetic phosphopeptide and KLH conjugates. Antibodies were purified by affinity-chromatography using epitope-specific phosphopeptide. Non-phospho specific antibodies were removed by chromatography using non-phosphopeptide.
Applications	WB
Species Reactivity	Hu Ms Rt
Specificity	Ataxin-3 (Phospho-Ser256) Antibody detects endogenous levels of Ataxin-3 only when phosphorylated at Ser256
Immunogen Type	Peptide
Immunogen Description	A synthesized peptide derived from human Ataxin-3 (Phospho-Ser256)
Target Name	Ataxin-3
Modification	Phospho
Other Names	ATXN3, ATX3, Ataxin 3, Ataxin 3 variant h, AT3, Ataxin 3 variant m, Ataxin 3 variant ref, Ataxin-3, Olivopontocerebellar ataxia 3, SCA3, MJD1, JOS, Josephin, MJD
Accession No.	Swiss-Prot#: P54252NCBI Gene ID: 4287
Uniprot	P54252
GeneID	4287;
Target Species	human
Calculated MW	43kd
Concentration	1.0mg/ml
Formulation	Liquid in PBS containing 50% glycerol, 0.5% BSA and 0.02% sodium azide.
Storage	Store at -20°C

## Application Details

Western blotting: 1:1000

## Images



Western Blot analysis of lysates of HEK293 and mouse brain, using primary antibody at 1:1000 dilution.

Note: This product is for in vitro research use only