

APBB3 antibody

Catalog No: #22967

Orders: order@signalwayantibody.comSupport: tech@signalwayantibody.com

Description

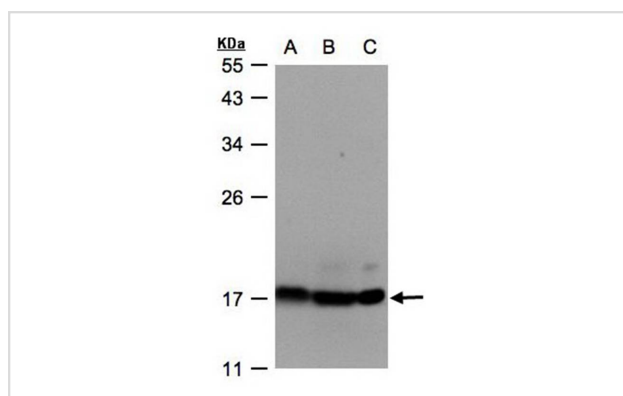
Product Name	APBB3 antibody
Host Species	Rabbit
Clonality	Polyclonal
Purification	Purified by antigen-affinity chromatography.
Applications	WB
Species Reactivity	Hu
Immunogen Type	Recombinant protein
Immunogen Description	Recombinant protein fragment contain a sequence corresponding to a region within amino acids 1 and 158 of Human ATP5D
Target Name	APBB3
Accession No.	Swiss-Prot:P30049Gene ID:513
Uniprot	P30049
GeneID	513;
Concentration	0.7mg/ml
Formulation	Supplied in 0.1M Tris-buffered saline with 10% Glycerol (pH7.0). 0.01% Thimerosal was added as a preservative.
Storage	Store at -20°C for long term preservation (recommended). Store at 4°C for short term use.

Application Details

Predicted MW: 17kd

Western blotting: 1:500-1:3000

Images



Sample(30 ug whole cell lysate)
A: Hep G2
B: MOLT4
C: Raji
12% SDS PAGE
Primary antibody diluted at 1: 500

Background

This gene encodes a subunit of mitochondrial ATP synthase. Mitochondrial ATP synthase catalyzes ATP synthesis, utilizing an electrochemical gradient of protons across the inner membrane during oxidative phosphorylation. ATP synthase is composed of two linked multi-subunit complexes:

the soluble catalytic core, F1, and the membrane-spanning component, Fo, comprising the proton channel. The catalytic portion of mitochondrial ATP synthase consists of 5 different subunits (alpha, beta, gamma, delta, and epsilon) assembled with a stoichiometry of 3 alpha, 3 beta, and a single representative of the other 3. The proton channel consists of three main subunits (a, b, c). This gene encodes the delta subunit of the catalytic core. Alternatively spliced transcript variants encoding the same isoform have been identified. [provided by RefSeq]

Note: This product is for in vitro research use only