

Kizuna (Phospho-Thr379) Antibody

Catalog No: #12606

Package Size: #12606-1 50ul #12606-2 100ul

Orders: order@signalwayantibody.comSupport: tech@signalwayantibody.com

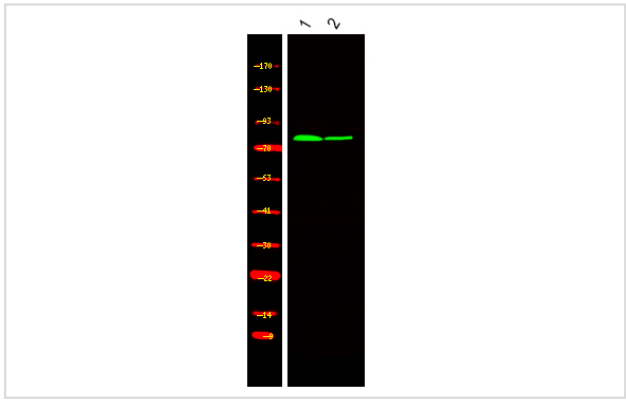
Description

Product Name	Kizuna (Phospho-Thr379) Antibody
Host Species	Rabbit
Clonality	Polyclonal
Purification	Antibodies were produced by immunizing rabbits with synthetic phosphopeptide and KLH conjugates. Antibodies were purified by affinity-chromatography using epitope-specific phosphopeptide. Non-phospho specific antibodies were removed by chromatography using non-phosphopeptide.
Applications	WB
Species Reactivity	Hu
Specificity	Kizuna (Phospho-Thr379) Antibody detects endogenous levels of Kizuna only when phosphorylated at Thr379
Immunogen Type	Peptide
Immunogen Description	A synthesized peptide derived from human Kizuna (Phospho-Thr379)
Target Name	Kizuna
Modification	Phospho
Other Names	PLK1S1, Centrosomal protein kizuna, Kizuna, Kiz, NCRNA00153, Non-protein coding RNA 153, Polo-like kinase 1 substrate 1, C20orf19, HT013
Accession No.	Swiss-Prot#: Q2M2Z5NCBI Gene ID: 55857
Uniprot	Q2M2Z5
GeneID	55857;
Target Species	human
Calculated MW	75kd
Concentration	1.0mg/ml
Formulation	Liquid in PBS containing 50% glycerol, 0.5% BSA and 0.02% sodium azide.
Storage	Store at -20°C

Application Details

Western blotting: 1:1000

Images



Western Blot analysis of lysates of 1. Hela cell and 2. Hela cell treated with 100ng/mL LPS for 30min, using primary antibody at 1:1000 dilution.

Note: This product is for in vitro research use only