

## MCL1 (Phospho-Thr163) Antibody

Catalog No: #12612



Package Size: #12612-1 50ul #12612-2 100ul

Orders: [order@signalwayantibody.com](mailto:order@signalwayantibody.com)Support: [tech@signalwayantibody.com](mailto:tech@signalwayantibody.com)

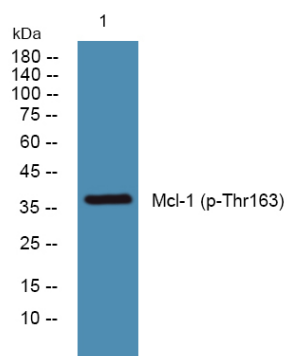
## Description

Product Name	MCL1 (Phospho-Thr163) Antibody
Host Species	Rabbit
Clonality	Polyclonal
Purification	Antibodies were produced by immunizing rabbits with synthetic phosphopeptide and KLH conjugates. Antibodies were purified by affinity-chromatography using epitope-specific phosphopeptide. Non-phospho specific antibodies were removed by chromatography using non-phosphopeptide.
Applications	WB
Species Reactivity	Hu Ms Rt
Specificity	MCL1 (Phospho-Thr163) Antibody detects endogenous levels of MCL1 only when phosphorylated at Thr163
Immunogen Type	Peptide
Immunogen Description	A synthesized peptide derived from human MCL1 (Phospho-Thr163)
Target Name	MCL1
Modification	Phospho
Other Names	MCL1, BCL2L3, Bcl-2-like protein 3, Bcl-2-related protein EAT/mcl1, Bcl2-L-3, MCL1S, MCL1L, Myeloid cell leukemia ES, MCL 1, MCL1-ES, TM, EAT, Mcl-1
Accession No.	Swiss-Prot#: Q07820NCBI Gene ID: 4170
Uniprot	Q07820
GeneID	4170;
Target Species	human
Calculated MW	35kd
Concentration	1.0mg/ml
Formulation	Liquid in PBS containing 50% glycerol, 0.5% BSA and 0.02% sodium azide.
Storage	Store at -20°C

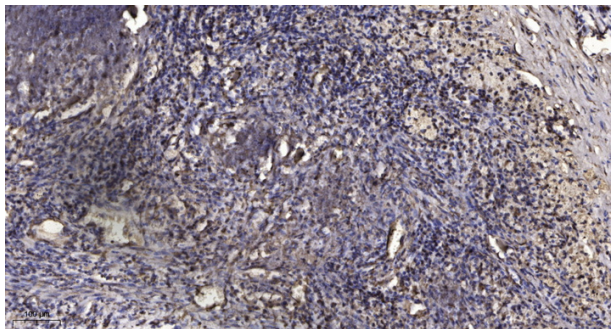
## Application Details

Western blotting: 1:1000

## Images



Western blot analysis of lysates from SH-SY5Y cells, primary antibody was diluted at 1:1000, 4° over night



Immunohistochemical analysis of paraffin-embedded human Squamous cell carcinoma of lung. 1, Antibody was diluted at 1:200(4° overnight). 2, Tris-EDTA,pH9.0 was used for antigen retrieval. 3,Secondary antibody was diluted at 1:200(room temperature, 45min).

Note: This product is for in vitro research use only