

Complement C2 antibody

Catalog No: #22971



Orders: order@signalwayantibody.com
Support: tech@signalwayantibody.com

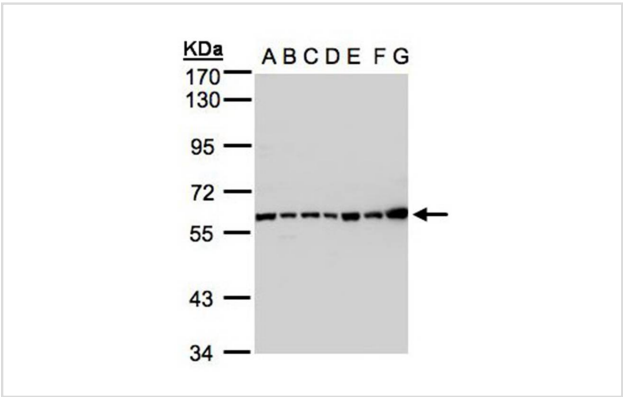
Description

Product Name	Complement C2 antibody
Host Species	Rabbit
Clonality	Polyclonal
Purification	Purified by antigen-affinity chromatography.
Applications	WB IF
Species Reactivity	Hu
Immunogen Type	Recombinant protein
Immunogen Description	Recombinant protein fragment contain a sequence corresponding to a region within amino acids 265 and 612 of Human C2
Target Name	Complement C2
Accession No.	Swiss-Prot:P06681Gene ID:717
Uniprot	P06681
GeneID	717;
Concentration	1mg/ml
Formulation	Supplied in 0.1M Tris-buffered saline with 10% Glycerol (pH7.0). 0.01% Thimerosal was added as a preservative.
Storage	Store at -20°C for long term preservation (recommended). Store at 4°C for short term use.

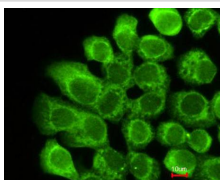
Application Details

Predicted MW: 83kd
Western blotting: 1:500-1:3000
Immunofluorescence: 1:100-1:200

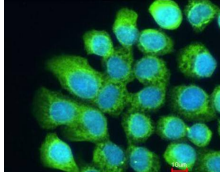
Images



Sample(30 ug whole cell lysate)
A: 293T
B: A431
C: H1299
D: HeLa S3
E: Hep G2
F: MOLT4
G: Raji
7.5% SDS PAGE
Primary antibody diluted at 1: 1000



Costained with Hoechst 33342



Immunofluorescence analysis of methanol-fixed A431, using Complement C2 antibody at 1: 200 dilution.

Background

Component C2 is a serum glycoprotein that functions as part of the classical pathway of the complement system. Activated C1 cleaves C2 into C2a and C2b. The serine proteinase C2a then combines with complement factor 4b to create the C3 or C5 convertase. Deficiency of C2 has been reported to associated with certain autoimmune diseases and SNPs in this gene have been associated with altered susceptibility to age-related macular degeneration. This gene localizes within the class III region of the MHC on the short arm of chromosome 6. Alternative splicing results in multiple transcript variants encoding distinct isoforms. Additional transcript variants have been described in publications but their full-length sequence has not been determined.

Note: This product is for in vitro research use only