

## PDE4D (Phospho-Ser578) Antibody

Catalog No: #12623

Package Size: #12623-1 50ul #12623-2 100ul

Orders: [order@signalwayantibody.com](mailto:order@signalwayantibody.com)Support: [tech@signalwayantibody.com](mailto:tech@signalwayantibody.com)

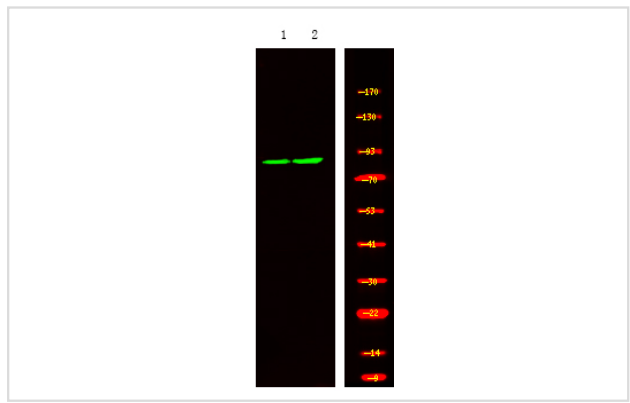
## Description

Product Name	PDE4D (Phospho-Ser578) Antibody
Host Species	Rabbit
Clonality	Polyclonal
Purification	Antibodies were produced by immunizing rabbits with synthetic phosphopeptide and KLH conjugates. Antibodies were purified by affinity-chromatography using epitope-specific phosphopeptide. Non-phospho specific antibodies were removed by chromatography using non-phosphopeptide.
Applications	WB
Species Reactivity	Hu Ms Rt
Specificity	PDE4D (Phospho-Ser578) Antibody detects endogenous levels of PDE4D only when phosphorylated at Ser578
Immunogen Type	Peptide
Immunogen Description	A synthesized peptide derived from human PDE4D (Phospho-Ser578)
Target Name	PDE4D
Modification	Phospho
Other Names	PDE4D, ACRDYS2, DPDE3, HSPDE4D, PDE43, Pde-ivd, PDE4DN2, Phosphodiesterase 4d, STRK1
Accession No.	Swiss-Prot#: Q08499NCBI Gene ID: 5144
Uniprot	Q08499
GeneID	5144;
Target Species	human
Calculated MW	91kd
Concentration	1.0mg/ml
Formulation	Liquid in PBS containing 50% glycerol, 0.5% BSA and 0.02% sodium azide.
Storage	Store at -20°C

## Application Details

Western blotting: 1:1000

## Images



Note: This product is for in vitro research use only