

Smad4 (Phospho-Thr276) Antibody

Catalog No: #12637

Orders: order@signalwayantibody.comSupport: tech@signalwayantibody.com

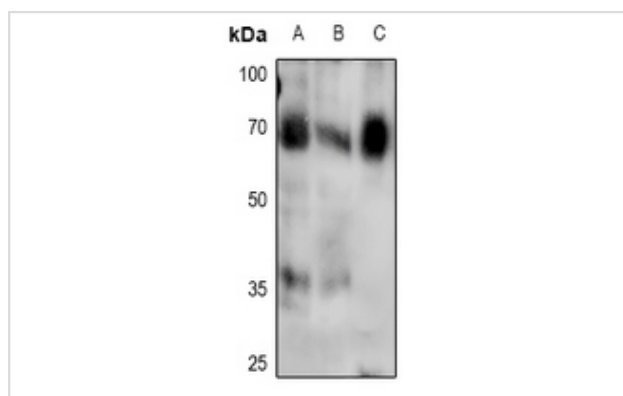
Description

Product Name	Smad4 (Phospho-Thr276) Antibody
Host Species	Rabbit
Clonality	Polyclonal
Purification	Antibodies were produced by immunizing rabbits with synthetic phosphopeptide and KLH conjugates. Antibodies were purified by affinity-chromatography using epitope-specific phosphopeptide. Non-phospho specific antibodies were removed by chromatography using non-phosphopeptide.
Applications	WB
Species Reactivity	Hu Ms Rt
Specificity	Smad4 (Phospho-Thr276) Antibody detects endogenous levels of Smad4 only when phosphorylated at Thr276
Immunogen Type	Peptide
Immunogen Description	A synthesized peptide derived from human Smad4 (Phospho-Thr276)
Target Name	Smad4
Modification	Phospho
Other Names	Smad4 (Phospho-Thr276) Antibody
Accession No.	Swiss-Prot#: Q13485NCBI Gene ID: 4089
Uniprot	Q13485
GeneID	4089;
Target Species	human
Calculated MW	60kd
Concentration	1.0mg/ml
Formulation	Rabbit IgG in phosphate buffered saline (without Mg2+ and Ca2+), pH 7.4, 150mM NaCl, 0.02% sodium azide and 50% glycerol.
Storage	Store at -20°C

Application Details

Western blotting: 1:1000

Images



Western blot analysis of Smad4 (Phospho-Thr276) expression in HeLa (A), HepG2 (B), mouse lung (C) whole cell lysates.

Note: This product is for in vitro research use only