

XRCC4 (Phospho-Ser260) Antibody

Catalog No: #12656



Package Size: #12656-1 50ul #12656-2 100ul

Orders: order@signalwayantibody.comSupport: tech@signalwayantibody.com

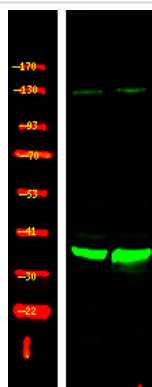
Description

Product Name	XRCC4 (Phospho-Ser260) Antibody
Host Species	Rabbit
Clonality	Polyclonal
Purification	Antibodies were produced by immunizing rabbits with synthetic phosphopeptide and KLH conjugates. Antibodies were purified by affinity-chromatography using epitope-specific phosphopeptide. Non-phospho specific antibodies were removed by chromatography using non-phosphopeptide.
Applications	WB
Species Reactivity	Hu
Specificity	XRCC4 (Phospho-Ser260) Antibody detects endogenous levels of XRCC4 only when phosphorylated at Ser260
Immunogen Type	Peptide
Immunogen Description	A synthesized peptide derived from human XRCC4 (Phospho-Ser260)
Target Name	XRCC4
Modification	Phospho
Other Names	XRCC4, DNA repair protein XRCC4
Accession No.	Swiss-Prot#: Q13426NCBI Gene ID: 7518
Uniprot	Q13426
GeneID	7518;
Target Species	human
Calculated MW	40kd
Concentration	1.0mg/ml
Formulation	Rabbit IgG in phosphate buffered saline (without Mg2+ and Ca2+), pH 7.4, 150mM NaCl, 0.02% sodium azide and 50% glycerol.
Storage	Store at -20°C

Application Details

Western blotting: 1:1000

Images



Western Blot analysis of lysates of 1. A549 cell and 2. A549 cell treated with 100ng/mL LPS for 30min, using primary antibody at 1:1000 dilution.

Note: This product is for in vitro research use only