

## LRP6 (Phospho-Thr1479) Antibody

Catalog No: #12661

Package Size: #12661-1 50ul #12661-2 100ul

Orders: [order@signalwayantibody.com](mailto:order@signalwayantibody.com)Support: [tech@signalwayantibody.com](mailto:tech@signalwayantibody.com)

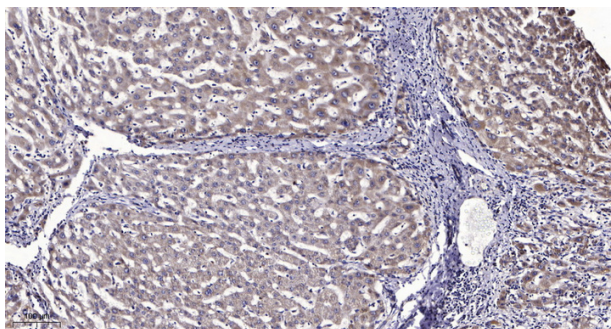
## Description

|                       |   |
|-----------------------|---|
| Product Name          | LRP6 (Phospho-Thr1479) Antibody   |
| Host Species          | Rabbit  |
| Clonality             | Polyclonal  |
| Purification          | Antibodies were produced by immunizing rabbits with synthetic phosphopeptide and KLH conjugates.<br>Antibodies were purified by affinity-chromatography using epitope-specific phosphopeptide. Non-phospho specific antibodies were removed by chromatography using non-phosphopeptide. |
| Applications          | WB  |
| Species Reactivity    | Hu Ms   |
| Specificity           | LRP6 (Phospho-Thr1479) Antibody detects endogenous levels of LRP6 only when phosphorylated at Thr1479   |
| Immunogen Type        | Peptide   |
| Immunogen Description | A synthesized peptide derived from human LRP6 (Phospho-Thr1479)   |
| Target Name           | LRP6  |
| Modification          | Phospho   |
| Other Names           | LRP6, ADCAD2, LRP-6   |
| Accession No.         | Swiss-Prot#: O75581NCBI Gene ID: 4040   |
| Uniprot               | O75581  |
| GeneID                | 4040;   |
| Target Species        | human   |
| Calculated MW         | 180kd   |
| Concentration         | 1.0mg/ml  |
| Formulation           | Liquid in PBS containing 50% glycerol, 0.5% BSA and 0.02% sodium azide.   |
| Storage               | Store at -20°C  |

## Application Details

Western blotting: 1:1000

## Images



Immunohistochemical analysis of paraffin-embedded human liver cancer. 1, Antibody was diluted at 1:200(4° overnight). 2, Tris-EDTA,pH9.0 was used for antigen retrieval. 3,Secondary antibody was diluted at 1:200(room temperature, 45min).

---

Note: This product is for in vitro research use only