

## EPHA3 (Phospho-Tyr602) Antibody

Catalog No: #12713



Package Size: #12713-1 50ul #12713-2 100ul

Orders: [order@signalwayantibody.com](mailto:order@signalwayantibody.com)Support: [tech@signalwayantibody.com](mailto:tech@signalwayantibody.com)

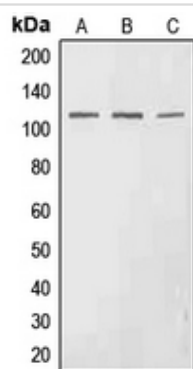
## Description

Product Name	EPHA3 (Phospho-Tyr602) Antibody
Host Species	Rabbit
Clonality	Polyclonal
Purification	Antibodies were produced by immunizing rabbits with synthetic phosphopeptide and KLH conjugates. Antibodies were purified by affinity-chromatography using epitope-specific phosphopeptide. Non-phospho specific antibodies were removed by chromatography using non-phosphopeptide.
Applications	WB
Species Reactivity	Hu Ms Rt
Specificity	EPHA3 (Phospho-Tyr602) Antibody detects endogenous levels of EPHA3 only when phosphorylated at Tyr602
Immunogen Type	Peptide
Immunogen Description	A synthesized peptide derived from human EPHA3 (Phospho-Tyr602)
Target Name	EPHA3
Modification	Phospho
Other Names	EPHA3, CEK4 kinase, EPH receptor A3, Ephrin type-A receptor 3, Eph-like tyrosine kinase 1, ETK1, HEK4, EPH-like kinase 4, HEK, Human embryo kinase 1, MEK4 kinase, Human embryo kinase, Tyrosine-protein kinase TYRO4, TYRO4, EK4, Eph kinase A3, ETK
Accession No.	Swiss-Prot#: P29320NCBI Gene ID: 2042
Uniprot	P29320
GeneID	2042;
Target Species	human
Calculated MW	110kd
Concentration	1.0mg/ml
Formulation	Liquid in 0.42% Potassium phosphate, 0.87% Sodium chloride, pH 7.3, 30% glycerol, and 0.01% sodium azide.
Storage	Store at -20°C

## Application Details

WB (1/500 - 1/1000)

## Images



Western blot analysis of EPHA3 (pY602) expression in HEK293T (A), SP2/0 (B), H9C2 (C) whole cell lysates.

Note: This product is for in vitro research use only