

14-3-3 σ (Phospho-Ser186) Antibody

Catalog No: #12739

Package Size: #12739-1 50ul #12739-2 100ul

Orders: order@signalwayantibody.comSupport: tech@signalwayantibody.com

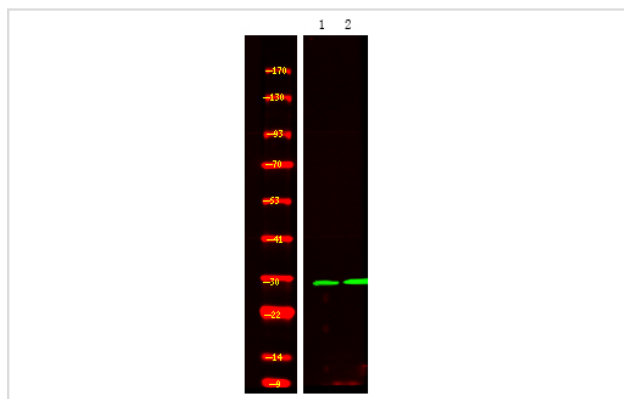
Description

Product Name	14-3-3 σ (Phospho-Ser186) Antibody
Host Species	Rabbit
Clonality	Polyclonal
Purification	Antibodies were produced by immunizing rabbits with synthetic phosphopeptide and KLH conjugates. Antibodies were purified by affinity-chromatography using epitope-specific phosphopeptide. Non-phospho specific antibodies were removed by chromatography using non-phosphopeptide.
Applications	WB
Species Reactivity	Hu Ms
Specificity	14-3-3 σ (Phospho-Ser186) Antibody detects endogenous levels of 14-3-3 σ only when phosphorylated at Ser186
Immunogen Type	Peptide
Immunogen Description	A synthesized peptide derived from human 14-3-3 σ (Phospho-Ser186)
Target Name	14-3-3 σ
Modification	Phospho
Other Names	SFN, 14-3-3 sigma, 14-3-3 protein sigma, HME1, Stratifin, YWHAS
Accession No.	Swiss-Prot#: P31947NCBI Gene ID: 2810
Uniprot	P31947
GeneID	2810;
Target Species	human
Calculated MW	28kd
Concentration	1.0mg/ml
Formulation	Liquid in PBS containing 50% glycerol, 0.5% BSA and 0.02% sodium azide.
Storage	Store at -20°C

Application Details

Western blotting: 1:1000

Images



Western Blot analysis of lysates of 1. A431 cell and 2. A431 cell treated with 100ng/mL LPS for 30min, using primary antibody at 1:1000 dilution.

Note: This product is for in vitro research use only