

HP1- $\beta$  (Phospho-Thr51) Antibody

Catalog No: #12760

Package Size: #12760-1 50ul #12760-2 100ul

Orders: [order@signalwayantibody.com](mailto:order@signalwayantibody.com)Support: [tech@signalwayantibody.com](mailto:tech@signalwayantibody.com)

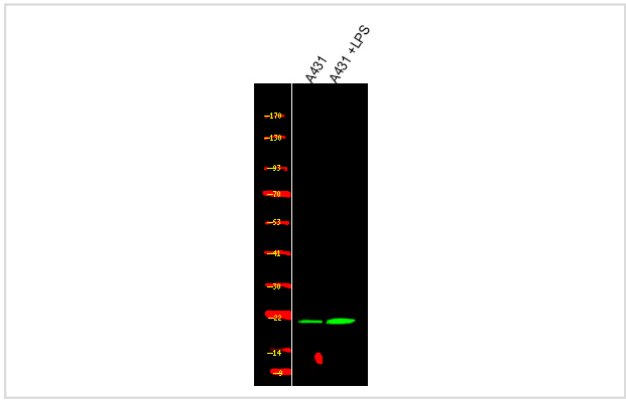
## Description

Product Name	HP1- $\beta$ (Phospho-Thr51) Antibody
Host Species	Rabbit
Clonality	Polyclonal
Purification	Antibodies were produced by immunizing rabbits with synthetic phosphopeptide and KLH conjugates. Antibodies were purified by affinity-chromatography using epitope-specific phosphopeptide. Non-phospho specific antibodies were removed by chromatography using non-phosphopeptide.
Applications	WB
Species Reactivity	Hu Ms Rt
Specificity	HP1- $\beta$ (Phospho-Thr51) Antibody detects endogenous levels of HP1- $\beta$ only when phosphorylated at Thr51
Immunogen Type	Peptide
Immunogen Description	A synthesized peptide derived from human HP1- $\beta$ (Phospho-Thr51)
Target Name	HP1- $\beta$
Modification	Phospho
Other Names	CBX1, CBX, Chromobox protein homolog 1, HP1 beta, HP1Hs-beta, Heterochromatin protein 1-beta, HP1Hsbeta, M31, Modifier 1 protein, MOD1, HP1 beta homolog, HP1-BETA, Chromobox homolog 1, Heterochromatin protein p25, p25beta
Accession No.	Swiss-Prot#: P83916NCBI Gene ID: 10951
Uniprot	P83916
GeneID	10951;
Target Species	human
Calculated MW	25kd
Concentration	1.0mg/ml
Formulation	Liquid in PBS containing 50% glycerol, 0.5% BSA and 0.02% sodium azide.
Storage	Store at -20°C

## Application Details

Western blotting: 1:1000

## Images



Western Blot analysis of lysates of A431 and A431 treated with LPS, using primary antibody at 1:1000 dilution.

Note: This product is for in vitro research use only