

NPM (Phospho-Ser70) Antibody

Catalog No: #12770

Package Size: #12770-1 50ul #12770-2 100ul

Orders: order@signalwayantibody.com

Support: tech@signalwayantibody.com

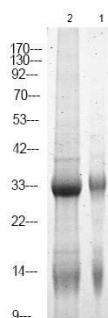
Description

Product Name	NPM (Phospho-Ser70) Antibody
Host Species	Rabbit
Clonality	Polyclonal
Purification	Antibodies were produced by immunizing rabbits with synthetic phosphopeptide and KLH conjugates. Antibodies were purified by affinity-chromatography using epitope-specific phosphopeptide. Non-phospho specific antibodies were removed by chromatography using non-phosphopeptide.
Applications	WB
Species Reactivity	Hu Ms Rt
Specificity	NPM (Phospho-Ser70) Antibody detects endogenous levels of NPM only when phosphorylated at Ser70
Immunogen Type	Peptide
Immunogen Description	A synthesized peptide derived from human NPM (Phospho-Ser70)
Target Name	NPM
Modification	Phospho
Other Names	NPM1, NPM, Nucleolar phosphoprotein B23, Nucleolar protein NO38, Numatrin, B23, Nucleophosmin
Accession No.	Swiss-Prot#: P06748NCBI Gene ID: 4869
Uniprot	P06748
GeneID	4869;
Target Species	human
Calculated MW	32kd, 38kd
Concentration	1.0mg/ml
Formulation	Liquid in PBS containing 50% glycerol, and 0.02% sodium azide.
Storage	Store at -20°C

Application Details

Western blotting: 1:1000

Images



Western Blot analysis of lysates of 1. RAW 264.7 cell and 2. Raji cell, using primary antibody at 1:1000 dilution.

Note: This product is for in vitro research use only