

cathepsin D antibody

Catalog No: #22988



Orders: order@signalwayantibody.com
Support: tech@signalwayantibody.com

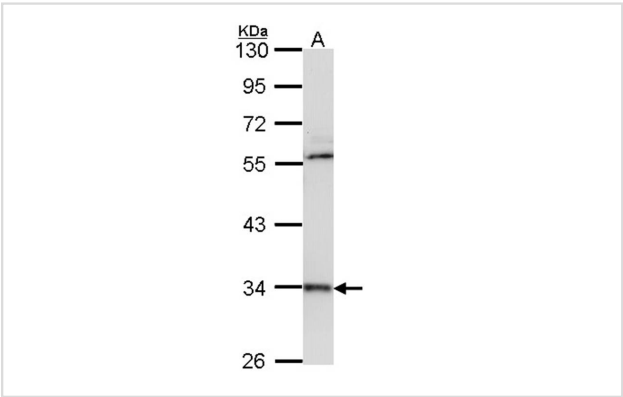
Description

Product Name	cathepsin D antibody
Host Species	Rabbit
Clonality	Polyclonal
Purification	Purified by antigen-affinity chromatography.
Applications	WB IHC
Species Reactivity	Hu
Immunogen Type	Recombinant protein
Immunogen Description	Recombinant protein fragment contain a sequence corresponding to a region within amino acids 72 and 262 of Human CTSD
Target Name	cathepsin D
Accession No.	Swiss-Prot:P07339Gene ID:1509
Uniprot	P07339
GeneID	1509;
Concentration	1mg/ml
Formulation	Supplied in 0.1M Tris-buffered saline with 10% Glycerol (pH7.0). 0.01% Thimerosal was added as a preservative.
Storage	Store at -20°C for long term preservation (recommended). Store at 4°C for short term use.

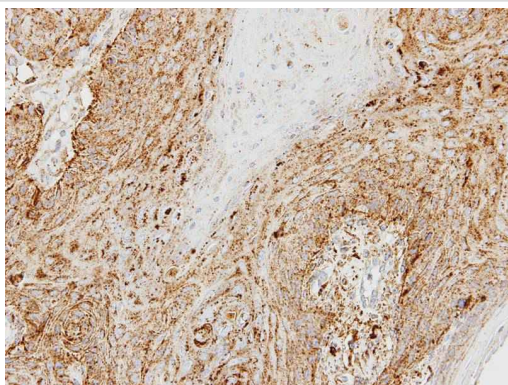
Application Details

Predicted MW: 45kd
Western blotting: 1:500-1:3000
Immunohistochemistry: 1:50-1:500

Images



Sample (30 ug of whole cell lysate)
A: H1299
10% SDS PAGE
Primary antibody diluted at 1: 1000



Immunohistochemical analysis of paraffin-embedded Cal27 xenograft, using Cathepsin D antibody at 1: 500 dilution.

Background

This gene encodes a lysosomal aspartyl protease composed of a dimer of disulfide-linked heavy and light chains, both produced from a single protein precursor. This proteinase, which is a member of the peptidase C1 family, has a specificity similar to but narrower than that of pepsin A. Transcription of this gene is initiated from several sites, including one which is a start site for an estrogen-regulated transcript. Mutations in this gene are involved in the pathogenesis of several diseases, including breast cancer and possibly Alzheimer disease. [provided by RefSeq]

Note: This product is for in vitro research use only