

ASF1B Antibody

Catalog No: #44296

Package Size: #44296-1 50ul #44296-2 100ul

Orders: order@signalwayantibody.comSupport: tech@signalwayantibody.com

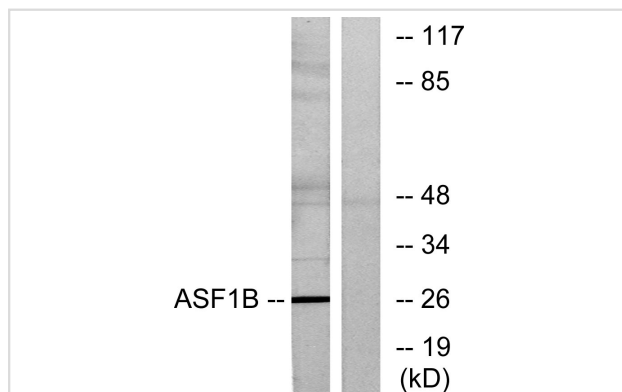
Description

Product Name	ASF1B Antibody
Host Species	Rabbit
Clonality	Polyclonal
Purification	Immunogen affinity purified
Applications	WB
Species Reactivity	Hu Ms
Specificity	ASF1B Antibody detects endogenous levels of total ASF1B
Immunogen Type	Peptide
Immunogen Description	A synthesized peptide derived from human ASF1B
Target Name	ASF1B
Other Names	ASF1B, CIA-II, HAsf1, HAsf1b, CCG1-interacting factor A-II, HCIA-II, Histone chaperone ASF1B
Accession No.	Swiss-Prot#: Q9NVP2NCBI Gene ID:55723
Uniprot	Q9NVP2
GeneID	55723;
Calculated MW	26kDa
Concentration	1.0mg/mL
Formulation	Liquid in PBS containing 50% glycerol, 0.5% BSA and 0.02% sodium azide.
Storage	Store at -20°C

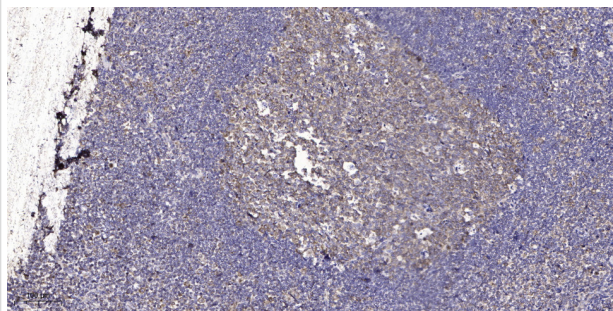
Application Details

Western blotting: 1:1000

Images



Western blot analysis of lysates from K562 cells, using ASF1B Antibody. The lane on the right is blocked with the synthesized peptide.



Immunohistochemical analysis of paraffin-embedded human tonsil. 1, Antibody was diluted at 1:200(4° overnight). 2, Tris-EDTA,pH9.0 was used for antigen retrieval. 3,Secondary antibody was diluted at 1:200(room temperature, 45min).

Note: This product is for in vitro research use only