

COX7a2/3 Antibody

Catalog No: #44311

Package Size: #44311-1 50ul #44311-2 100ul

Orders: order@signalwayantibody.comSupport: tech@signalwayantibody.com

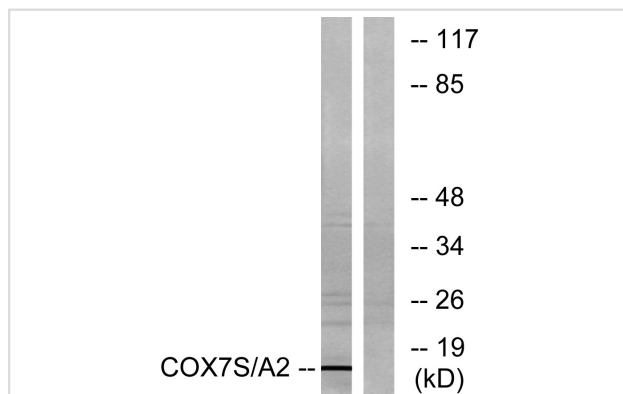
Description

Product Name	COX7a2/3 Antibody
Host Species	Rabbit
Clonality	Polyclonal
Purification	Immunogen affinity purified
Applications	WB
Species Reactivity	Hu Ms Rt
Specificity	COX7a2/3 Antibody detects endogenous levels of total COX7a2/3
Immunogen Type	Peptide
Immunogen Description	A synthesized peptide derived from human COX7a2/3
Target Name	COX7a2/3
Other Names	COX7
Accession No.	Swiss-Prot#: O60397/P14406NCBI Gene ID:1348/ 1347
Uniprot	O60397
GeneID	1348;1347;
Calculated MW	12kDa
Concentration	1.0mg/mL
Formulation	Rabbit IgG in phosphate buffered saline , pH 7.4, 150mM NaCl, 0.02% sodium azide and 50% glycerol.
Storage	Store at -20°C

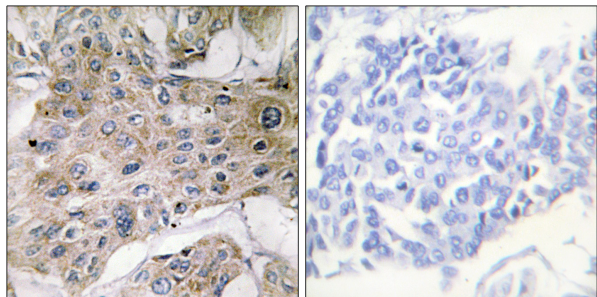
Application Details

Western blotting: 1:1000

Images



Western blot analysis of lysates from rat heart cells, using COX7S/A2 Antibody. The lane on the right is blocked with the synthesized peptide.



Immunohistochemistry analysis of paraffin-embedded human breast carcinoma tissue, using COX7S/A2 Antibody. The picture on the right is blocked with the synthesized peptide.

Note: This product is for in vitro research use only