

## TAS2R42 Antibody

Catalog No: #44657

Package Size: #44657-1 50ul #44657-2 100ul

Orders: [order@signalwayantibody.com](mailto:order@signalwayantibody.com)Support: [tech@signalwayantibody.com](mailto:tech@signalwayantibody.com)

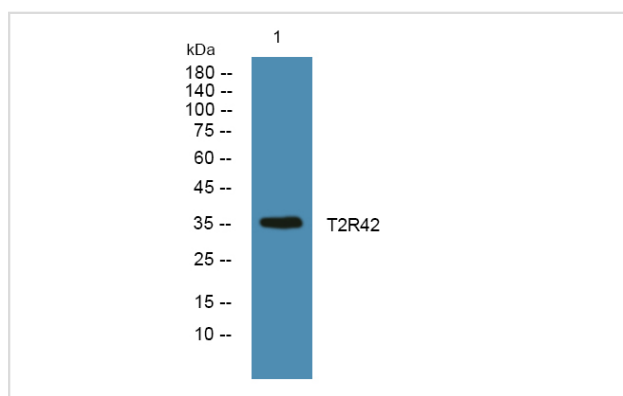
## Description

Product Name	TAS2R42 Antibody
Host Species	Rabbit
Clonality	Polyclonal
Purification	Immunogen affinity purified
Applications	WB
Species Reactivity	Hu Ms Rt
Specificity	TAS2R42 Antibody detects endogenous levels of total TAS2R42
Immunogen Type	Peptide
Immunogen Description	A synthesized peptide derived from human TAS2R42
Target Name	TAS2R42
Other Names	Taste receptor type 2 member 42 T2R42 Taste receptor type 2 member 55 T2R55, TAS2R55
Accession No.	Swiss-Prot#: Q7RTR8NCBI Gene ID:353164
Uniprot	Q7RTR8
GenelD	353164;
Calculated MW	36 kDa
Concentration	1.0mg/mL
Formulation	Liquid in PBS containing 50% glycerol, and 0.02% sodium azide.
Storage	Store at -20°C

## Application Details

Western blotting: 1:1000-3000

## Images



---

Note: This product is for in vitro research use only