

PDE4D antibody

Catalog No: #23049



Orders: [order@signalwayantibody.com](mailto:order@signalwayantibody.com)  
Support: [tech@signalwayantibody.com](mailto:tech@signalwayantibody.com)

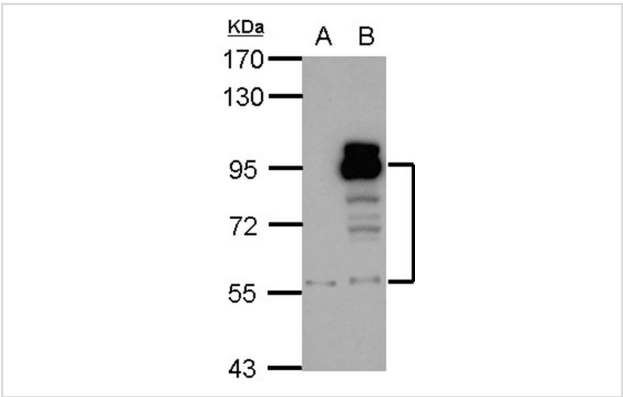
Description

|                       |  |
|-----------------------|--|
| Product Name          | PDE4D antibody   |
| Host Species          | Rabbit   |
| Clonality             | Polyclonal   |
| Purification          | Purified by antigen-affinity chromatography.   |
| Applications          | WB IHC IF  |
| Species Reactivity    | Hu   |
| Immunogen Type        | Peptide  |
| Immunogen Description | Synthetic peptide contain a sequence corresponding to a region within amino acids 610 and 673 of PDE4D         |
| Target Name           | PDE4D  |
| Other Names           | DPDE3; STRK1; HSPDE4D; PDE4DN2   |
| Accession No.         | Swiss-Prot:Q08499Gene ID:5144  |
| Uniprot               | Q08499   |
| GeneID                | 5144;  |
| Concentration         | 0.3mg/ml   |
| Formulation           | Supplied in 0.1M Tris-buffered saline with 10% Glycerol (pH7.0). 0.01% Thimerosal was added as a preservative. |
| Storage               | Store at -20°C for long term preservation (recommended). Store at 4°C for short term use.                      |

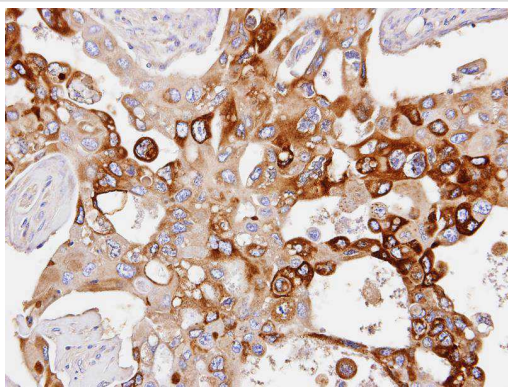
Application Details

|                                   |
|-----------------------------------|
| Predicted MW: 76kd                |
| Western blotting: 1:500-1:3000    |
| Immunohistochemistry: 1:100-1:250 |
| Immunofluorescence: 1:100-1:200   |

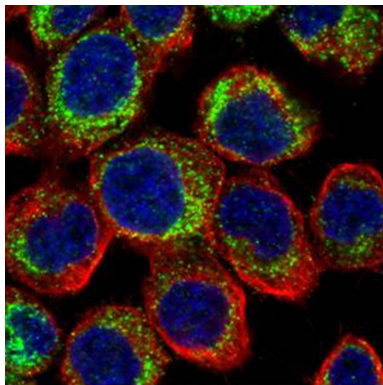
Images



Sample (30 ug of whole cell lysate)  
A: A431  
B: HeLa  
7.5% SDS PAGE  
Primary antibody diluted at 1: 1000



Immunohistochemical analysis of paraffin-embedded H441 xenograft, using PDE4D antibody at 1: 100 dilution.



Confocal immunofluorescence analysis (Olympus FV10i) of paraformaldehyde-fixed A431, using PDE4D antibody (Green) at 1: 500 dilution and alpha-tubulin antibody (Red) at 1: 500.

## Background

The PDE4D gene is complex and has at least 9 different isoforms that encode functional proteins. These proteins degrade the second messenger cAMP, which is a key signal transduction molecule in multiple cell types, including vascular cells (Dominiczak and McBride, 2003 [PubMed 14517535]).[supplied by OMIM]

Note: This product is for in vitro research use only