

## GPR75 Antibody

Catalog No: #44938



Package Size: #44938-1 50ul #44938-2 100ul

Orders: [order@signalwayantibody.com](mailto:order@signalwayantibody.com)Support: [tech@signalwayantibody.com](mailto:tech@signalwayantibody.com)

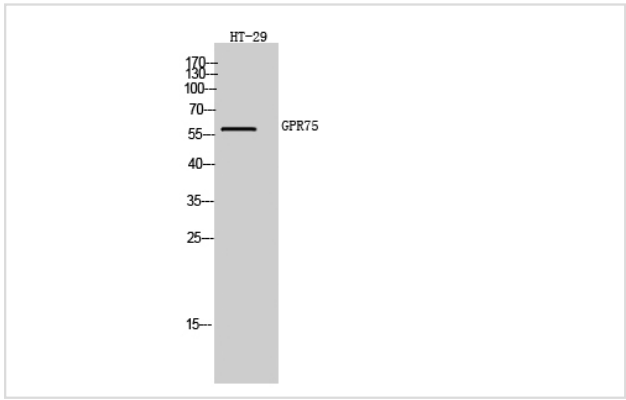
## Description

Product Name	GPR75 Antibody
Host Species	Rabbit
Clonality	Polyclonal
Purification	Immunogen affinity purified
Applications	WB
Species Reactivity	Hu Ms
Specificity	GPR75antibody detects endogenous levels of total?GPR75
Immunogen Type	Peptide
Immunogen Description	A synthesized peptide derived from human GPR75
Target Name	GPR75
Other Names	G protein coupled receptor 75 antibody GPR chr2 antibody Gpr75 antibody  GPR75_HUMAN antibody GPRchr2 antibody OTTHUMP00000159608 antibody Probable G protein coupled receptor 75 antibody Probable G-protein coupled receptor 75 antibody WI 31133 antibody WI3113
Accession No.	Swiss-Prot#: O95800NCBI Gene ID:10936
Uniprot	O95800
GeneID	10936;
Calculated MW	59 kDa
Concentration	1.0mg/mL
Formulation	Liquid in PBS containing 50% glycerol, 0.5% BSA and 0.02% sodium azide.
Storage	Store at -20°C

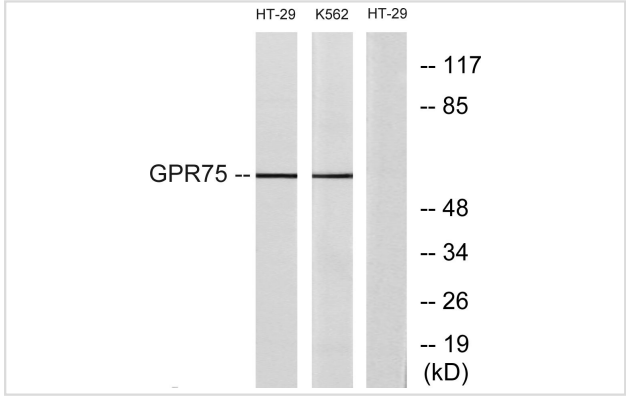
## Application Details

Western blotting:□ 1:500-1:2000

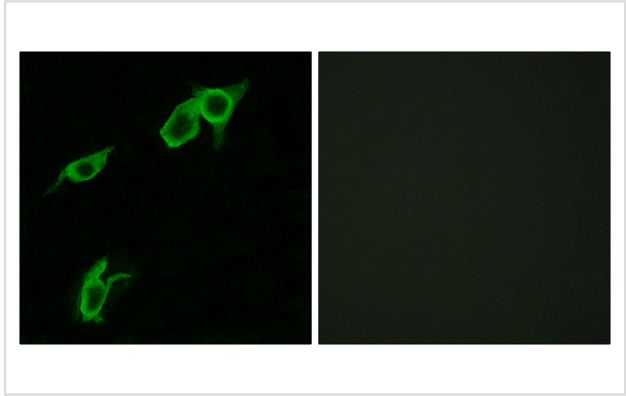
## Images



Western Blot analysis of HT-29 cells using GPR75 Polyclonal Antibody



Western blot analysis of lysates from HT-29 and K562 cells, using GPR75 Antibody. The lane on the right is blocked with the synthesized peptide.



Immunofluorescence analysis of LOVO cells, using GPR75 Antibody. The picture on the right is blocked with the synthesized peptide.

Note: This product is for in vitro research use only