

# Peripherin antibody

Catalog No: #23057

Orders: [order@signalwayantibody.com](mailto:order@signalwayantibody.com)Support: [tech@signalwayantibody.com](mailto:tech@signalwayantibody.com)

## Description

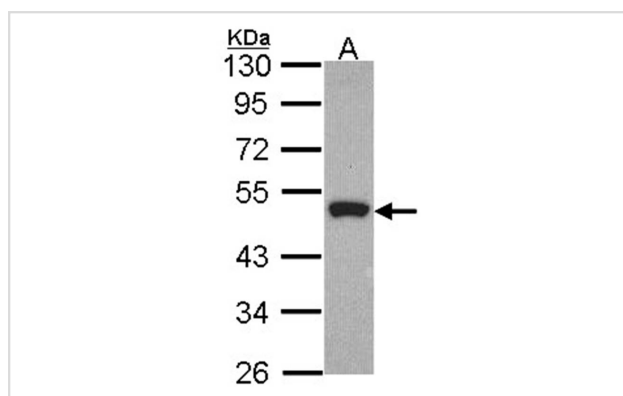
Product Name	Peripherin antibody
Host Species	Rabbit
Clonality	Polyclonal
Purification	Purified by antigen-affinity chromatography.
Applications	WB
Species Reactivity	Hu
Immunogen Type	Recombinant protein
Immunogen Description	Recombinant protein fragment contain a sequence corresponding to a region within amino acids 1 and 185 of Peripherin
Target Name	Peripherin
Accession No.	Swiss-Prot:P41219Gene ID:5630
Uniprot	P41219
GeneID	5630;
Concentration	1mg/ml
Formulation	Supplied in 0.1M Tris-buffered saline with 10% Glycerol (pH7.0). 0.01% Thimerosal was added as a preservative.
Storage	Store at -20°C for long term preservation (recommended). Store at 4°C for short term use.

## Application Details

Predicted MW: 54kd

Western blotting: 1:500-1:3000

## Images



Sample (30 ug of whole cell lysate)

A: HeLa

10% SDS PAGE

Peripherin antibody diluted at 1: 1000

## Background

This gene encodes a cytoskeletal protein found in neurons of the peripheral nervous system. The encoded protein is a type III intermediate filament protein with homology to other cytoskeletal proteins such as desmin, and is a different protein that the peripherin found in photoreceptors. Mutations in

this gene have been associated with susceptibility to amyotrophic lateral sclerosis. [provided by RefSeq]

---

Note: This product is for in vitro research use only