

20S Proteasome alpha6 antibody

Catalog No: #23060



Orders: order@signalwayantibody.com
Support: tech@signalwayantibody.com

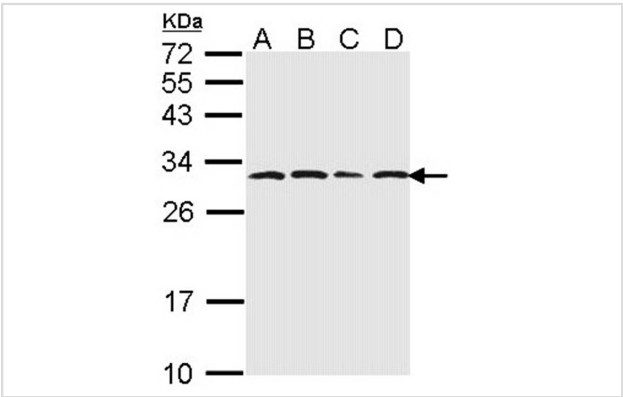
Description

Product Name	20S Proteasome alpha6 antibody
Host Species	Rabbit
Clonality	Polyclonal
Purification	Purified by antigen-affinity chromatography.
Applications	WB IHC IF
Species Reactivity	Hu
Immunogen Type	Recombinant protein
Immunogen Description	Recombinant protein fragment contain a sequence corresponding to a region within amino acids 57 and 244 of 20S Proteasome alpha6
Target Name	20S Proteasome alpha6
Accession No.	Swiss-Prot:P60900Gene ID:5687
Uniprot	P60900
GeneID	5687;
Concentration	1mg/ml
Formulation	Supplied in 0.1M Tris-buffered saline with 20% Glycerol (pH7.0). 0.01% Thimerosal was added as a preservative.
Storage	Store at -20°C for long term preservation (recommended). Store at 4°C for short term use.

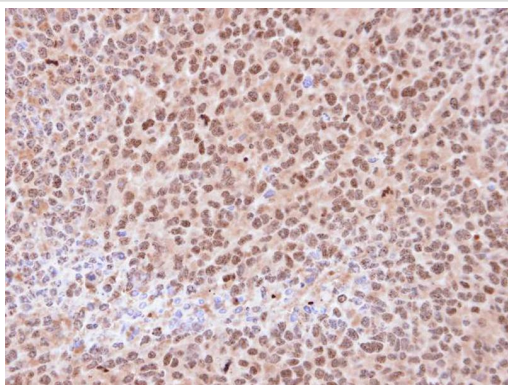
Application Details

Predicted MW: 27kd
Western blotting: 1:500-1:3000
Immunohistochemistry: 1:100-1:500
Immunofluorescence: 1:100-1:200

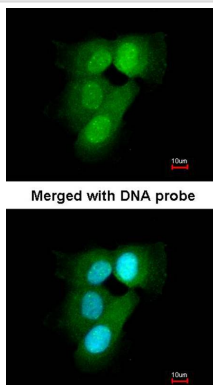
Images



Sample (30 ug of whole cell lysate)
A: 293T
B: A431
C: H1299
D: Hela
12% SDS PAGE
Primary antibody diluted at 1: 1000



Immunohistochemical analysis of paraffin-embedded H1299 xenograft, using 20S Proteasome alpha6 antibody at 1: 100 dilution.



Immunofluorescence analysis of paraformaldehyde-fixed A431, using 20S Proteasome alpha6 antibody at 1: 200 dilution.

Background

The proteasome is a multicatalytic proteinase complex with a highly ordered ring-shaped 20S core structure. The core structure is composed of 4 rings of 28 non-identical subunits; 2 rings are composed of 7 alpha subunits and 2 rings are composed of 7 beta subunits. Proteasomes are distributed throughout eukaryotic cells at a high concentration and cleave peptides in an ATP/ubiquitin-dependent process in a non-lysosomal pathway. An essential function of a modified proteasome, the immunoproteasome, is the processing of class I MHC peptides. This gene encodes a member of the peptidase T1A family, that is a 20S core alpha subunit. A pseudogene has been identified on the Y chromosome. [provided by RefSeq]

Note: This product is for in vitro research use only