

KLRC4 antibody

Catalog No: #23083

Orders: order@signalwayantibody.com

Support: tech@signalwayantibody.com

Description

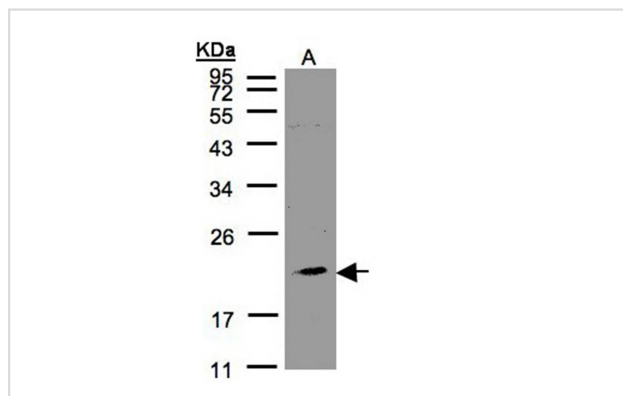
Product Name	KLRC4 antibody
Host Species	Rabbit
Clonality	Polyclonal
Purification	Purified by antigen-affinity chromatography.
Applications	WB
Species Reactivity	Hu
Immunogen Type	Peptide
Immunogen Description	Synthetic peptide contain a sequence corresponding to a region within amino acids 1 and 15 of Human KLRC4
Target Name	KLRC4
Other Names	FLJ17759; FLJ78582; NKG2-F; NKG2F
Accession No.	Swiss-Prot:O43908Gene ID:8302
Uniprot	O43908
GeneID	8302;
Concentration	0.2mg/ml
Formulation	Supplied in 0.1M Tris-buffered saline with 10% Glycerol (pH7.0). 0.01% Thimerosal was added as a preservative.
Storage	Store at -20°C for long term preservation (recommended). Store at 4°C for short term use.

Application Details

Predicted MW: 18kd

Western blotting: 1:500-1:3000

Images



Sample(30 ug of whole cell lysate)

A: 293T

12% SDS PAGE

Primary antibody diluted at 1: 1000

Background

Natural killer (NK) cells are lymphocytes that can mediate lysis of certain tumor cells and virus-infected cells without previous activation. They can also

regulate specific humoral and cell-mediated immunity. NK cells preferentially express several calcium-dependent (C-type) lectins, which have been implicated in the regulation of NK cell function. KLRC4 is a member of the NKG2 group which are expressed primarily in natural killer (NK) cells and encodes a family of transmembrane proteins characterized by a type II membrane orientation (extracellular C terminus) and the presence of a C-type lectin domain. The NKG2 gene family is located within the NK complex, a region that contains several C-type lectin genes preferentially expressed on NK cells. The 3' end of the KLRC4 transcript includes the first non-coding exon found at the 5' end of the adjacent D12S2489E gene transcript.
[provided by RefSeq]

Note: This product is for in vitro research use only