

## ABH1 antibody

Catalog No: #23093

Orders: [order@signalwayantibody.com](mailto:order@signalwayantibody.com)Support: [tech@signalwayantibody.com](mailto:tech@signalwayantibody.com)

## Description

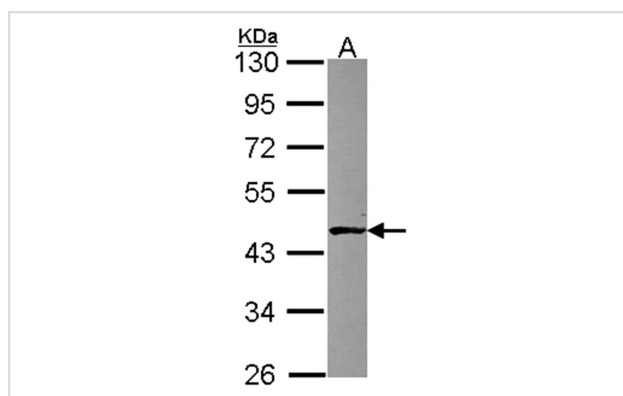
Product Name	ABH1 antibody
Host Species	Rabbit
Clonality	Polyclonal
Purification	Purified by antigen-affinity chromatography.
Applications	WB
Species Reactivity	Hu
Immunogen Type	Recombinant protein
Immunogen Description	Recombinant protein fragment contain a sequence corresponding to a region within amino acids 166 and 357 of ABH1
Target Name	ABH1
Accession No.	Swiss-Prot:Q13686Gene ID:8846
Uniprot	Q13686
GeneID	8846;
Concentration	1mg/ml
Formulation	Supplied in 0.1M Tris-buffered saline with 20% Glycerol (pH7.0). 0.01% Thimerosal was added as a preservative.
Storage	Store at -20°C for long term preservation (recommended). Store at 4°C for short term use.

## Application Details

Predicted MW: 44kd

Western blotting: 1:500-1:3000

## Images



Sample (30 ug of whole cell lysate)  
A: NT2D1  
10% SDS PAGE  
Primary antibody diluted at 1: 1000

## Background

This gene encodes a homolog to the E. coli alkB gene product. The E. coli alkB protein is part of the adaptive response mechanism of DNA alkylation damage repair. It is involved in damage reversal by oxidative demethylation of 1-methyladenine and 3-methylcytosine. [provided by RefSeq]

---

Note: This product is for in vitro research use only