

## CD203c Antibody

Catalog No: #45324

Package Size: #45324-1 50ul #45324-2 100ul

Orders: [order@signalwayantibody.com](mailto:order@signalwayantibody.com)Support: [tech@signalwayantibody.com](mailto:tech@signalwayantibody.com)

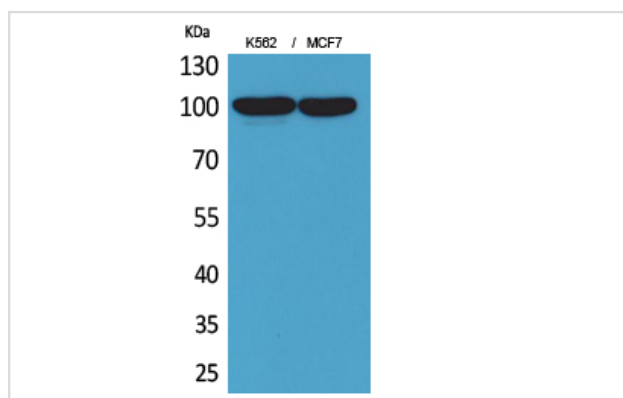
## Description

Product Name	CD203c Antibody
Host Species	Rabbit
Clonality	Polyclonal
Purification	Immunogen affinity purified
Applications	WB
Species Reactivity	Hu Ms Rt
Specificity	CD203c Antibody detects endogenous levels of total CD203c
Immunogen Type	Peptide
Immunogen Description	A synthesized peptide derived from human CD203c
Target Name	CD203c
Other Names	ENPP3, CD203c antigen, CD203c, E-NPP 3, NPP3, Phosphodiesterase-I beta, PD-IBETA, PDNP3, Phosphodiesterase I beta, B10, gp130RB13-6
Accession No.	Swiss-Prot#: O14638NCBI Gene ID:5169
Uniprot	O14638
GeneID	5169;
Calculated MW	100 kDa
Concentration	1.0mg/mL
Formulation	Liquid in PBS containing 50% glycerol, 0.5% BSA and 0.02% sodium azide.
Storage	Store at -20°C

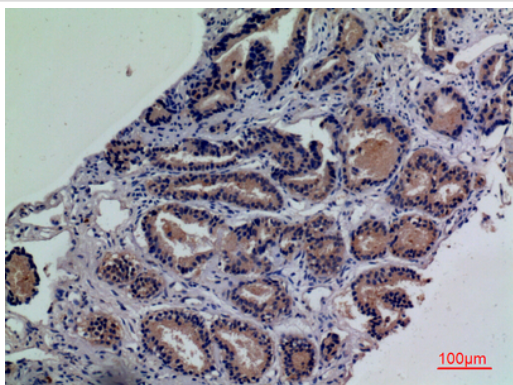
## Application Details

Western blotting: 1:1000-3000

## Images



Western Blot analysis of K562, MCF7 cells using CD203c Polyclonal Antibody. Antibody was diluted at 1:2000. Secondary antibody(catalog#:RS0002) was diluted at 1:20000



Immunohistochemical analysis of paraffin-embedded human-prostate-cancer, antibody was diluted at 1:100

---

Note: This product is for in vitro research use only