

# Malectin antibody

Catalog No: #23099

Orders: [order@signalwayantibody.com](mailto:order@signalwayantibody.com)Support: [tech@signalwayantibody.com](mailto:tech@signalwayantibody.com)

## Description

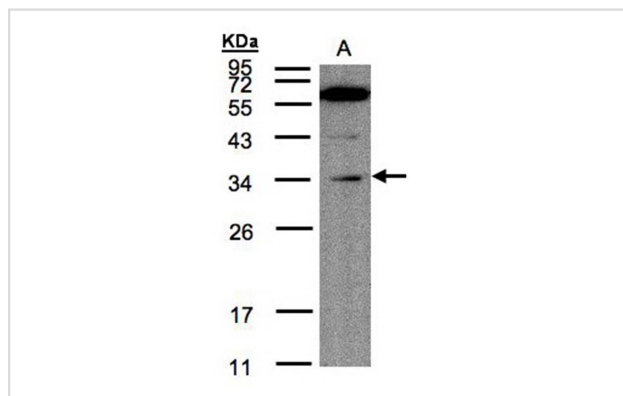
Product Name	Malectin antibody
Host Species	Rabbit
Clonality	Polyclonal
Purification	Purified by antigen-affinity chromatography.
Applications	WB
Species Reactivity	Hu
Immunogen Type	Recombinant protein
Immunogen Description	Recombinant protein fragment contain a sequence corresponding to a region within amino acids 106 and 269 of Malectin
Target Name	Malectin
Other Names	MLEC
Accession No.	Swiss-Prot:Q14165Gene ID:9761
Uniprot	Q14165
GeneID	9761;
Concentration	0.5mg/ml
Formulation	Supplied in 0.1M Tris-buffered saline with 10% Glycerol (pH7.0). 0.01% Thimerosal was added as a preservative.
Storage	Store at -20°C for long term preservation (recommended). Store at 4°C for short term use.

## Application Details

Predicted MW: 32kd

Western blotting: 1:500-1:3000

## Images



Sample(30 ug of whole cell lysate)

A: Raji

12% SDS PAGE

Primary antibody diluted at 1: 200

## Background

Carbohydrate-binding protein with a strong ligand preference for Glc2-N-glycan. May play a role in the early steps of protein N-glycosylation.

---

Note: This product is for in vitro research use only