

RASSF2 antibody

Catalog No: #23100

Orders: order@signalwayantibody.comSupport: tech@signalwayantibody.com

Description

Product Name	RASSF2 antibody
Host Species	Rabbit
Clonality	Polyclonal
Purification	Purified by antigen-affinity chromatography.
Applications	WB IF
Species Reactivity	Hu
Immunogen Type	Recombinant protein
Immunogen Description	Recombinant protein fragment contain a sequence corresponding to a region within amino acids 1 and 263 of RASSF2
Target Name	RASSF2
Accession No.	Swiss-Prot:P50749Gene ID:9770
Uniprot	P50749
GeneID	9770;
Concentration	0.8mg/ml
Formulation	Supplied in 0.1M Tris-buffered saline with 10% Glycerol (pH7.0). 0.01% Thimerosal was added as a preservative.
Storage	Store at -20°C for long term preservation (recommended). Store at 4°C for short term use.

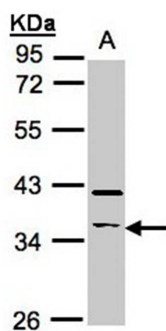
Application Details

Predicted MW: 38kd

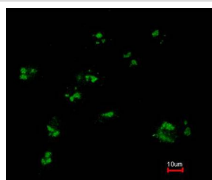
Western blotting: 1:500-1:3000

Immunofluorescence: 1:100-1:200

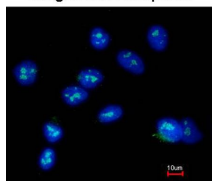
Images



Sample(30 ug whole cell lysate)
A: Raji
10% SDS PAGE
Primary antibody diluted at 1: 500



Merged with DNA probe



Immunofluorescence analysis of paraformaldehyde-fixed A549, using RASSF2 antibody at 1: 200 dilution.

Background

This gene encodes a protein that contains a Ras association domain. Similar to its cattle and sheep counterparts, this gene is located near the prion gene. Two alternatively spliced transcripts encoding the same isoform have been reported. [provided by RefSeq]

Note: This product is for in vitro research use only