

SEMA3C Antibody

Catalog No: #45392



Package Size: #45392-1 50ul #45392-2 100ul

Orders: [order@signalwayantibody.com](mailto:order@signalwayantibody.com)  
Support: [tech@signalwayantibody.com](mailto:tech@signalwayantibody.com)

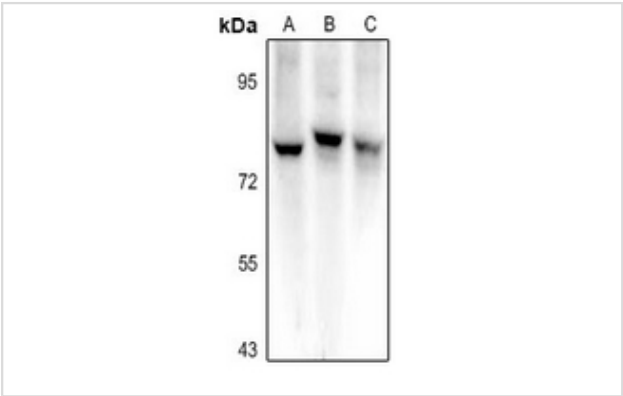
Description

Product Name	SEMA3C Antibody
Host Species	Rabbit
Clonality	Polyclonal
Purification	Immunogen affinity purified
Applications	WB, IH
Species Reactivity	Hu Ms Rt
Specificity	SEMA3C Antibody detects endogenous levels of total SEMA3C
Immunogen Type	Peptide
Immunogen Description	A synthesized peptide derived from human SEMA3C
Target Name	SEMA3C
Other Names	SEMA3C, Semaphorin-E, SEMAE, SemE, Semaphorin-3C, Sema E, Semaphorin E
Accession No.	Swiss-Prot#: Q99985NCBI Gene ID:10512
Uniprot	Q99985
GeneID	10512;
Calculated MW	85 kDa
Concentration	1.0mg/mL
Formulation	Liquid in 0.42% Potassium phosphate, 0.87% Sodium chloride, pH 7.3, 30% glycerol, and 0.01% sodium azide.
Storage	Store at -20°C

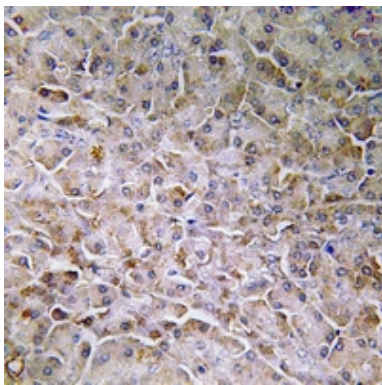
Application Details

WB (1/500 - 1/1000), IH (1/50 - 1/200)

Images



Western blot analysis of Semaphorin 3C expression in C6 (A), MCF7 (B), A375 (C) whole cell lysates.



Immunohistochemical analysis of Semaphorin 3C staining in human pancreas formalin fixed paraffin embedded tissue section. The section was pre-treated using heat mediated antigen retrieval with sodium citrate buffer (pH 6.0). The section was then incubated with the antibody at room temperature and detected using an HRP conjugated compact polymer system. DAB was used as the chromogen. The section was then counterstained with haematoxylin and mounted with DPX.

---

Note: This product is for in vitro research use only