

## beta Tubulin 3 antibody

Catalog No: #23104

Orders: [order@signalwayantibody.com](mailto:order@signalwayantibody.com)Support: [tech@signalwayantibody.com](mailto:tech@signalwayantibody.com)

## Description

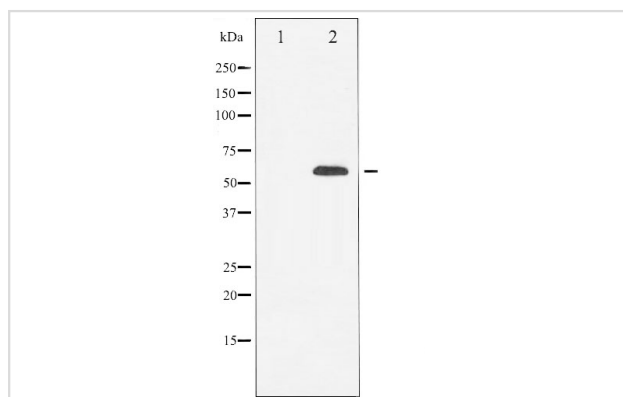
Product Name	beta Tubulin 3 antibody
Host Species	Rabbit
Clonality	Polyclonal
Purification	Purified by antigen-affinity chromatography.
Applications	WB
Species Reactivity	Hu Ms Rt
Immunogen Description	A synthesized peptide derived from human beta Tubulin 3
Target Name	beta Tubulin 3
Accession No.	NCBI Gene ID: 10381NCBI mRNA#: NM_006086NCBI Protein#: NP_006077
Uniprot	Q13509
GeneID	10381;
Concentration	1mg/ml
Formulation	Rabbit IgG in phosphate buffered saline , pH 7.4, 150mM NaCl, 0.02% sodium azide and 50% glycerol.
Storage	Store at -20°C for long term preservation (recommended). Store at 4°C for short term use.

## Application Details

Predicted MW: 55kd

Western blotting: 1:1000-1:5000

## Images



Western blot analysis of Tubulin beta expression in Mouse Brain, whole cell lysates. The lane on the left is treated with the antigen-specific peptide.

## Background

This gene encodes a class III member of the beta tubulin protein family. Beta tubulins are one of two core protein families (alpha and beta tubulins) that heterodimerize and assemble to form microtubules. This protein is primarily expressed in neurons and may be involved in neurogenesis and axon guidance and maintenance. Mutations in this gene are the cause of congenital fibrosis of the extraocular muscles type 3. Alternate splicing results in multiple transcript variants. A pseudogene of this gene is found on chromosome 6. [provided by RefSeq]

---

Note: This product is for in vitro research use only