

Centaurin alpha1 antibody

Catalog No: #23112



Orders: order@signalwayantibody.com
Support: tech@signalwayantibody.com

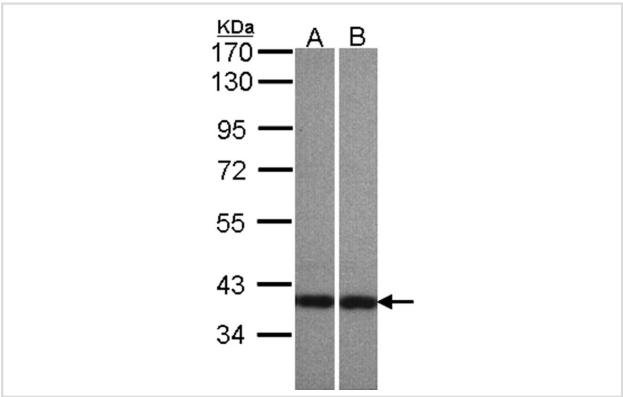
Description

Product Name	Centaurin alpha1 antibody
Host Species	Rabbit
Clonality	Polyclonal
Purification	Purified by antigen-affinity chromatography.
Applications	WB IHC
Species Reactivity	Hu
Immunogen Type	Peptide
Immunogen Description	Synthetic peptide contain a sequence corresponding to a region within amino acids 312 and 374 of Human CENTA1
Target Name	Centaurin alpha1
Accession No.	Swiss-Prot:O75689Gene ID:11033
Uniprot	O75689
GeneID	11033;
Concentration	0.4mg/ml
Formulation	Supplied in 0.1M Tris-buffered saline with 10% Glycerol (pH7.0). 0.01% Thimerosal was added as a preservative.
Storage	Store at -20°C for long term preservation (recommended). Store at 4°C for short term use.

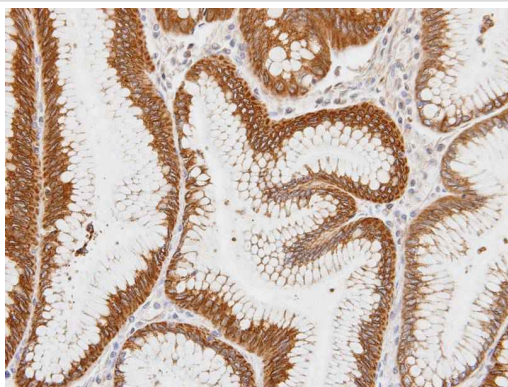
Application Details

Predicted MW: 43kd
Western blotting: 1:500-1:3000
Immunohistochemistry: 1:100-1:250

Images



Sample(30 ug of whole cell lysate)
A: A431
B: HeLaS3
7.5% SDS PAGE
Primary antibody diluted at 1: 500



Immunohistochemical analysis of paraffin-embedded gastric tissue, using Centaurin alpha 1 antibody at 1: 100 dilution.

Note: This product is for in vitro research use only