

## ASK1(Phospho-Ser966) Antibody

Catalog No: #11179



Package Size: #11179-1 50ul #11179-2 100ul

Orders: [order@signalwayantibody.com](mailto:order@signalwayantibody.com)Support: [tech@signalwayantibody.com](mailto:tech@signalwayantibody.com)

## Description

Product Name	ASK1(Phospho-Ser966) Antibody
Host Species	Rabbit
Clonality	Polyclonal
Purification	Antibodies were produced by immunizing rabbits with synthetic phosphopeptide and KLH conjugates. Antibodies were purified by affinity-chromatography using epitope-specific phosphopeptide. Non-phospho specific antibodies were removed by chromatography using non-phosphopeptide.
Applications	WB IHC
Species Reactivity	Hu Ms Mk
Specificity	The antibody detects endogenous level of ASK1 only when phosphorylated at serine 966.
Immunogen Type	Peptide-KLH
Immunogen Description	Peptide sequence around phosphorylation site of serine 966 (S-I-S(p)-L-P) derived from Human ASK1.
Target Name	ASK1
Modification	Phospho
Other Names	ASK-1; M3K5; MAP3K5; MAPK/ERK kinase kinase 5; MAPKKK5
Accession No.	Swiss-Prot: Q99683NCBI Protein: NP_005914.1
Uniprot	Q99683
GeneID	4217;
Concentration	1.0mg/ml
Formulation	Supplied at 1.0mg/mL in phosphate buffered saline (without Mg <sup>2+</sup> and Ca <sup>2+</sup> ), pH 7.4, 150mM NaCl, 0.02% sodium azide and 50% glycerol.
Storage	Store at -20°C for long term preservation (recommended). Store at 4°C for short term use.

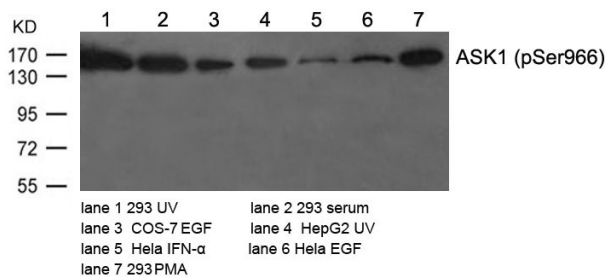
## Application Details

Predicted MW: 155kd

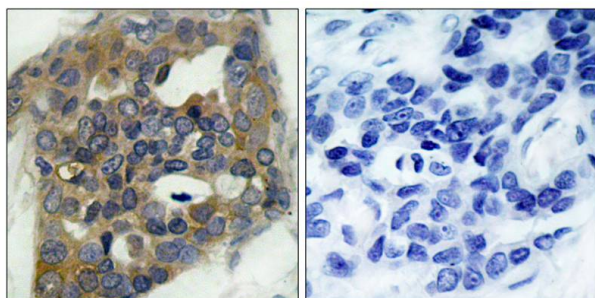
Western blotting: 1:500~1:1000

Immunohistochemistry: 1:50~1:100

## Images



Western blot analysis of extracts from various cells using ASK1(Phospho-Ser966) Antibody #11179.



Immunohistochemical analysis of paraffin-embedded human breast carcinoma tissue using ASK1(Phospho-Ser966) Antibody #11179(left) or the same antibody preincubated with blocking peptide(right).

## Background

Component of a protein kinase signal transduction cascade. Phosphorylates and activates MAP2K4 and MAP2K6, which in turn activate the JNK and p38 MAP kinases, respectively. Overexpression induces apoptotic cell death.

Zhang W, et al. (2005) J Biol Chem. 280(19): 19036-19044.

Fujii K, et al. (2004) Oncogene. 23(29):5099-5104.

Goldman EH, et al. (2004) J Biol Chem 2004 Mar 12; 279(11): 10442-10449.

Zhang L, et al. (1999) Proc Natl Acad Sci U S A. 96(15): 8511-8515.

Note: This product is for in vitro research use only