

## Sec61 gamma subunit antibody

Catalog No: #23120

Orders: [order@signalwayantibody.com](mailto:order@signalwayantibody.com)Support: [tech@signalwayantibody.com](mailto:tech@signalwayantibody.com)

## Description

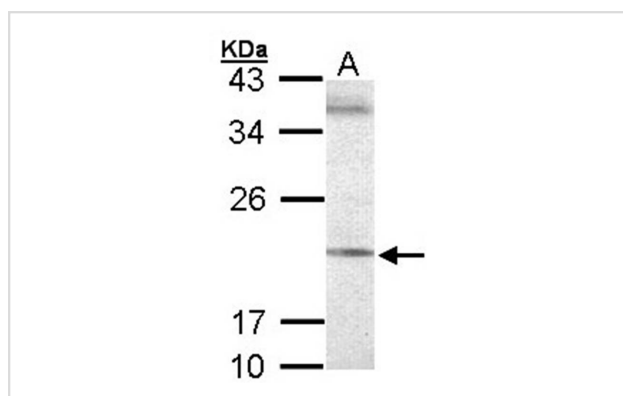
Product Name	Sec61 gamma subunit antibody
Host Species	Rabbit
Clonality	Polyclonal
Purification	Affinity purified by Protein A.
Applications	WB
Species Reactivity	Hu
Immunogen Type	Peptide
Immunogen Description	Synthetic peptide contain a sequence corresponding to a region within amino acids 1 and 36 of Human SEC61G
Target Name	Sec61 gamma subunit
Accession No.	Swiss-Prot:P60059Gene ID:23480
Uniprot	P60059
GeneID	23480;
Concentration	1mg/ml
Formulation	Supplied in 0.1M Tris-buffered saline with 10% Glycerol (pH7.0). 0.01% Thimerosal was added as a preservative.
Storage	Store at -20°C for long term preservation (recommended). Store at 4°C for short term use.

## Application Details

Predicted MW: 8kd

Western blotting: 1:500-1:3000

## Images



Sample (30 ug of whole cell lysate)  
A: 293T  
12% SDS PAGE  
Primary antibody diluted at 1: 500

## Background

The Sec61 complex is the central component of the protein translocation apparatus of the endoplasmic reticulum (ER) membrane. Oligomers of the Sec61 complex form a transmembrane channel where proteins are translocated across and integrated into the ER membrane. This complex consists

of three membrane proteins- alpha, beta, and gamma. This gene encodes the gamma-subunit protein. Alternatively spliced transcript variants encoding the same protein have been identified. [provided by RefSeq]

---

Note: This product is for in vitro research use only