

DDAH1 antibody

Catalog No: #23121

Orders: order@signalwayantibody.comSupport: tech@signalwayantibody.com

Description

Product Name	DDAH1 antibody
Host Species	Rabbit
Clonality	Polyclonal
Purification	Purified by antigen-affinity chromatography.
Applications	WB IF
Species Reactivity	Hu
Immunogen Type	Peptide
Immunogen Description	Synthetic peptide contain a sequence corresponding to a region within amino acids 223 and 285 of Human DDAH1
Target Name	DDAH1
Accession No.	Swiss-Prot:O94760Gene ID:23576
Uniprot	O94760
GeneID	23576;
Concentration	0.5mg/ml
Formulation	Supplied in 0.1M Tris-buffered saline with 10% Glycerol (pH7.0). 0.01% Thimerosal was added as a preservative.
Storage	Store at -20°C for long term preservation (recommended). Store at 4°C for short term use.

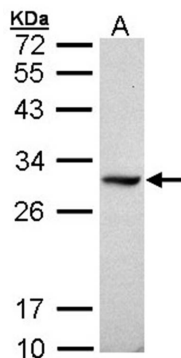
Application Details

Predicted MW: 31kd

Western blotting: 1:500-1:3000

Immunofluorescence: 1:100-1:200

Images

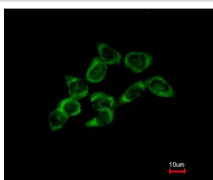


Sample (30 ug of whole cell lysate)

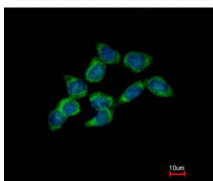
A: Raji

12% SDS PAGE

Primary antibody diluted at 1: 1000



Costained with Hoechst 33342



Immunofluorescence analysis of methanol-fixed HCT116, using DDAH1 antibody at 1: 500 dilution.

Background

This gene belongs to the dimethylarginine dimethylaminohydrolase (DDAH) gene family. The encoded enzyme plays a role in nitric oxide generation by regulating cellular concentrations of methylarginines, which in turn inhibit nitric oxide synthase activity. [provided by RefSeq]

Note: This product is for in vitro research use only