

## SERP1 antibody

Catalog No: #23124

Orders: order@signalwayantibody.com

Support: tech@signalwayantibody.com

## Description

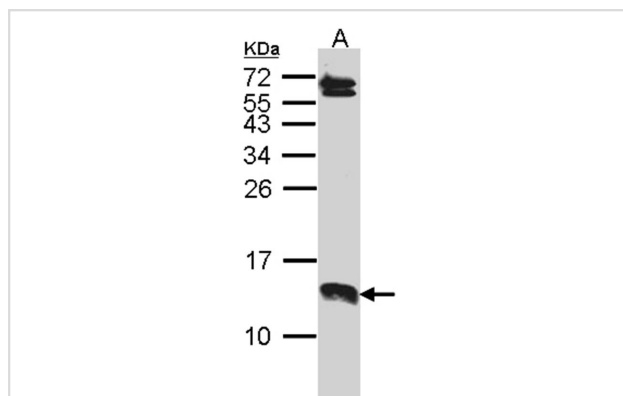
Product Name	SERP1 antibody
Host Species	Rabbit
Clonality	Polyclonal
Purification	Purified by antigen-affinity chromatography.
Applications	WB
Species Reactivity	Hu
Immunogen Type	Peptide
Immunogen Description	Synthetic peptide contain a sequence corresponding to a region within amino acids 1 and 21 of Human SERP1
Target Name	SERP1
Accession No.	NCBI Gene ID: 27230NCBI mRNA#: NM_014445NCBI Protein#: NP_055260
Uniprot	Q9Y6X1
GeneID	27230;
Concentration	1mg/ml
Formulation	Supplied in 0.1M Tris-buffered saline with 10% Glycerol (pH7.0). 0.01% Thimerosal was added as a preservative.
Storage	Store at -20°C for long term preservation (recommended). Store at 4°C for short term use.

## Application Details

Predicted MW: 7kd

Western blotting: 1:500-1:3000

## Images



Sample (30 ug of whole cell lysate)

A: A431

15% SDS PAGE

Primary antibody diluted at 1: 1000

## Background

Interacts with target proteins during their translocation into the lumen of the endoplasmic reticulum. Protects unfolded target proteins against degradation during ER stress. May facilitate glycosylation of target proteins after termination of ER stress. May modulate the use of N-glycosylation

sites on target proteins.

---

Note: This product is for in vitro research use only