

C20orf11 antibody

Catalog No: #23135



Orders: order@signalwayantibody.com
Support: tech@signalwayantibody.com

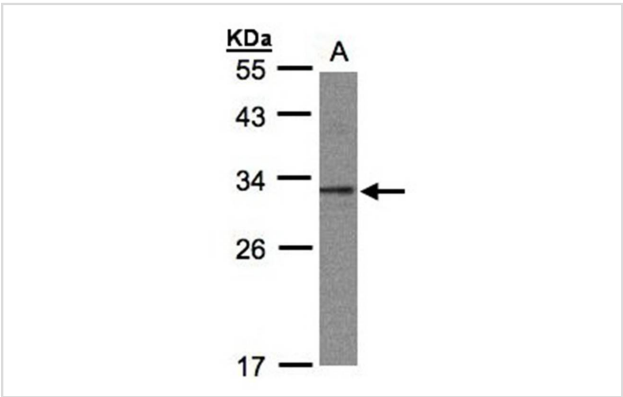
Description

Product Name	C20orf11 antibody
Host Species	Rabbit
Clonality	Polyclonal
Purification	Purified by antigen-affinity chromatography.
Applications	WB IHC IF
Species Reactivity	Hu
Immunogen Type	Recombinant protein
Immunogen Description	Recombinant protein fragment contain a sequence corresponding to a region within amino acids 1 and 178 of C20orf11
Target Name	C20orf11
Accession No.	Swiss-Prot:Q9NWU2Gene ID:54994
Uniprot	Q9NWU2
GeneID	54994;
Concentration	1mg/ml
Formulation	Supplied in 0.1M Tris-buffered saline with 10% Glycerol (pH7.0). 0.01% Thimerosal was added as a preservative.
Storage	Store at -20°C for long term preservation (recommended). Store at 4°C for short term use.

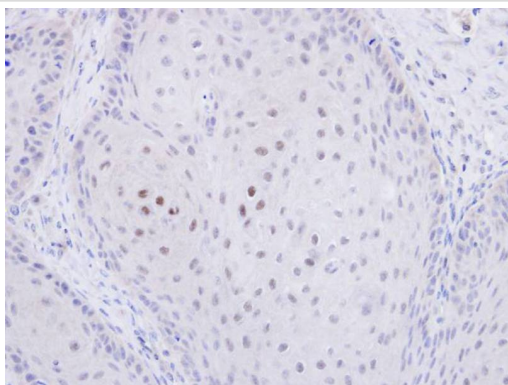
Application Details

Predicted MW: 27kd
Western blotting: 1:500-1:3000
Immunohistochemistry: 1:100-1:500
Immunofluorescence: 1:100-1:200

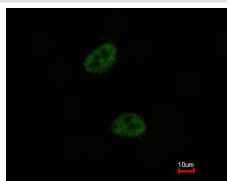
Images



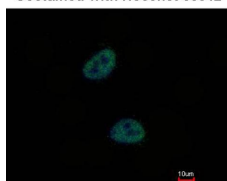
Sample(30 ug whole cell lysate)
A: 293T
12% SDS PAGE
Primary antibody diluted at 1: 1000



Immunohistochemical analysis of paraffin-embedded Cal27 xenograft, using C20orf11 antibody at 1: 500 dilution.



Costained with Hoechst 33342



Immunofluorescence analysis of paraformaldehyde-fixed HeLa, using C20orf11 antibody at 1: 1000 dilution.

Note: This product is for in vitro research use only