

TMLHE antibody

Catalog No: #23139

Orders: order@signalwayantibody.com

Support: tech@signalwayantibody.com

Description

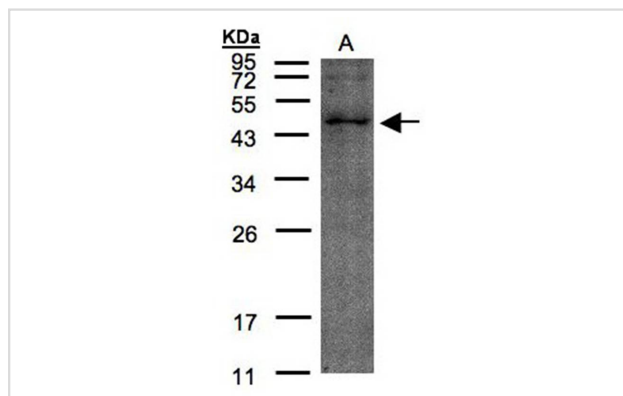
Product Name	TMLHE antibody
Host Species	Rabbit
Clonality	Polyclonal
Purification	Affinity purified by Protein A.
Applications	WB
Species Reactivity	Hu
Immunogen Type	Recombinant protein
Immunogen Description	Recombinant protein fragment contain a sequence corresponding to a region within amino acids 115 and 367 of TMLHE
Target Name	TMLHE
Other Names	TMLH; BBOX2; XAP130; FLJ10727
Accession No.	Swiss-Prot:Q9NVH6Gene ID:55217
Uniprot	Q9NVH6
GeneID	55217;
Concentration	6.7mg/ml
Formulation	Supplied in 0.1M Tris-buffered saline with 10% Glycerol (pH7.0). 0.01% Thimerosal was added as a preservative.
Storage	Store at -20°C for long term preservation (recommended). Store at 4°C for short term use.

Application Details

Predicted MW: 50kd

Western blotting: 1:100-1:1000

Images



Sample(30 ug of whole cell lysate)
A: HeLa S3
12% SDS PAGE
Primary antibody diluted at 1: 200

Background

Epsilon-N-trimethyllysine hydroxylase (EC 1.14.11.8) catalyzes the conversion of epsilon-N-trimethyllysine to beta-hydroxy-N-epsilon-trimethyllysine in

the first step of L-carnitine biosynthesis (Vaz et al., 2001 [PubMed 11431483]).[supplied by OMIM]

Note: This product is for in vitro research use only