

# MT-ATP6 Antibody

Catalog No: #45782



Package Size: #45782-1 50ul #45782-2 100ul

Orders: [order@signalwayantibody.com](mailto:order@signalwayantibody.com)  
Support: [tech@signalwayantibody.com](mailto:tech@signalwayantibody.com)

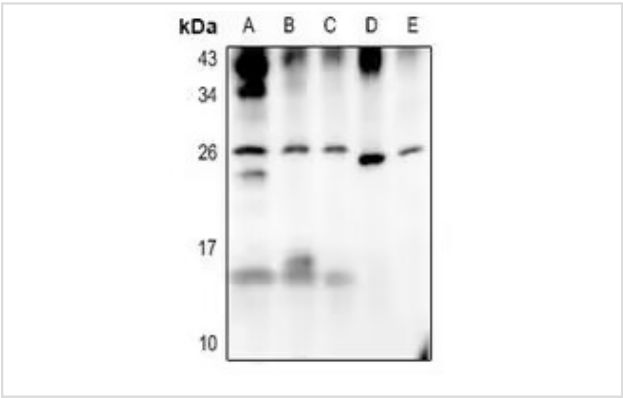
## Description

Product Name	MT-ATP6 Antibody
Host Species	Rabbit
Clonality	Polyclonal
Purification	Immunogen affinity purified
Applications	WB, IF/IC
Species Reactivity	Human Mouse Rat
Specificity	MT-ATP6 Antibody detects endogenous levels of total MT-ATP6
Immunogen Type	Peptide
Immunogen Description	A synthesized peptide derived from human MT-ATP6
Target Name	MT-ATP6
Other Names	ATP6, ATPASE6, MTATP6
Accession No.	Swiss-Prot#: P00846NCBI Gene ID:4508
Uniprot	P00846
GeneID	4508;
Calculated MW	25 kDa
Concentration	1.0mg/mL
Formulation	Liquid in 0.42% Potassium phosphate, 0.87% Sodium chloride, pH 7.3, 30% glycerol, and 0.01% sodium azide.
Storage	Store at -20°C

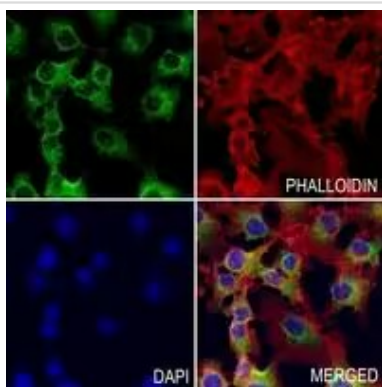
## Application Details

Western blotting: 1/500 - 1/1000  
Immunofluorescence/Immunocytochemistry: 1/50 - 1/200

## Images



Western blot analysis of ATP6 expression in HEK293T (A), HCT116 (B), A375 (C), PC12 (D), CT26 (E) whole cell lysates.



Immunofluorescent analysis of ATP6 staining in COS7 cells. Formalin-fixed cells were permeabilized with 0.1% Triton X-100 in TBS for 5-10 minutes and blocked with 3% BSA-PBS for 30 minutes at room temperature. Cells were probed with the primary antibody in 3% BSA-PBS and incubated overnight at 4 °C in a humidified chamber. Cells were washed with PBST and incubated with a AF488-conjugated secondary antibody (green) in PBS at room temperature in the dark. Phalloidin - AF594 was used to stain Actin filaments (red). DAPI was used to stain the cell nuclei (blue).

Note: This product is for in vitro research use only