

FCRL3 Polyclonal Antibody

Catalog No: #27445



Package Size: #27445-1 50ul #27445-2 100ul

Orders: order@signalwayantibody.com
Support: tech@signalwayantibody.com

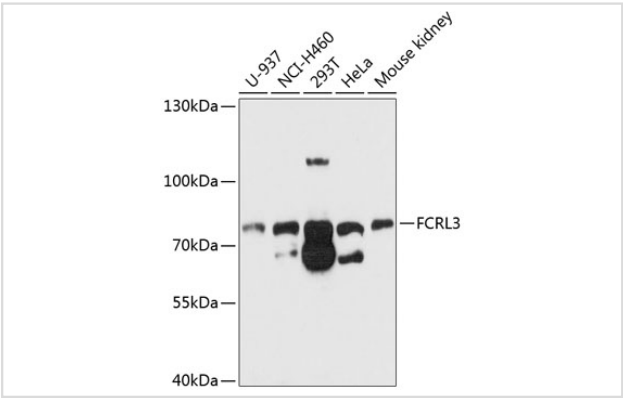
Description

| | |
|-----------------------|---|
| Product Name | FCRL3 Polyclonal Antibody |
| Host Species | Rabbit |
| Clonality | Polyclonal |
| Isotype | IgG |
| Purification | Affinity purification |
| Applications | WB,IHC |
| Species Reactivity | Human,Mouse,Rat |
| Immunogen Description | Recombinant fusion protein of human FCRL3 (NP_443171.2). |
| Other Names | FCRL3; CD307c; FCRH3; IFGP3; IRTA3; SPAP2; Fc receptor like 3 |
| Accession No. | Swiss-Prot#:Q96P31NCBI Gene ID:115352 |
| Uniprot | Q96P31 |
| GeneID | 115352; |
| Calculated MW | 81kDa |
| Formulation | Avoid freeze / thaw cycles. Buffer: PBS with 50% glycerol, pH7.4. |
| Storage | Store at -20°C |

Application Details

WB 1:500 - 1:2000IHC 1:100 - 1:200

Images



Western blot analysis of extracts of various cell lines, using FCRL3 at 1:1000 dilution.

Background

This gene encodes a member of the immunoglobulin receptor superfamily and is one of several Fc receptor-like glycoproteins clustered on the long arm of chromosome 1. The encoded protein contains immunoreceptor-tyrosine activation motifs and immunoreceptor-tyrosine inhibitory motifs in its cytoplasmic domain and may play a role in regulation of the immune system. Mutations in this gene have been associated with rheumatoid arthritis, autoimmune thyroid disease, and systemic lupus erythematosus. Alternative splicing results in multiple transcript variants.

Note: This product is for in vitro research use only