

# SHMT1 Polyclonal Antibody

Catalog No: #27704



Package Size: #27704-1 50ul #27704-2 100ul

Orders: [order@signalwayantibody.com](mailto:order@signalwayantibody.com)  
Support: [tech@signalwayantibody.com](mailto:tech@signalwayantibody.com)

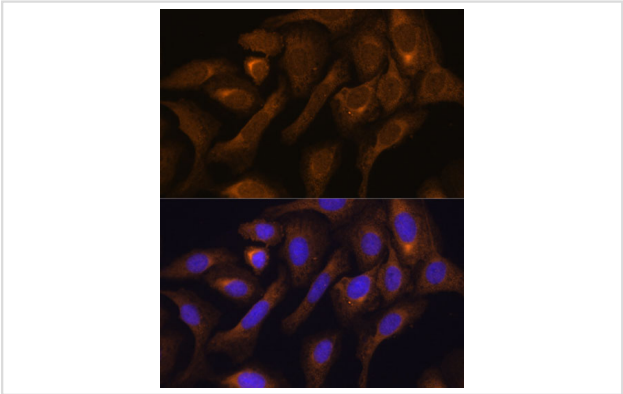
## Description

Product Name	SHMT1 Polyclonal Antibody
Host Species	Rabbit
Clonality	Polyclonal
Isotype	IgG
Purification	Affinity purification
Applications	WB,IHC,IF
Species Reactivity	Human,Mouse,Rat
Immunogen Description	Recombinant fusion protein of human SHMT1 (NP_683718.1).
Other Names	SHMT1; CSHMT; SHMT; serine hydroxymethyltransferase 1
Accession No.	Swiss-Prot#:P34896NCBI Gene ID:6470
Uniprot	P34896
GeneID	6470;
Calculated MW	53kDa
Formulation	Avoid freeze / thaw cycles. Buffer: PBS with 50% glycerol, pH7.4.
Storage	Store at -20°C

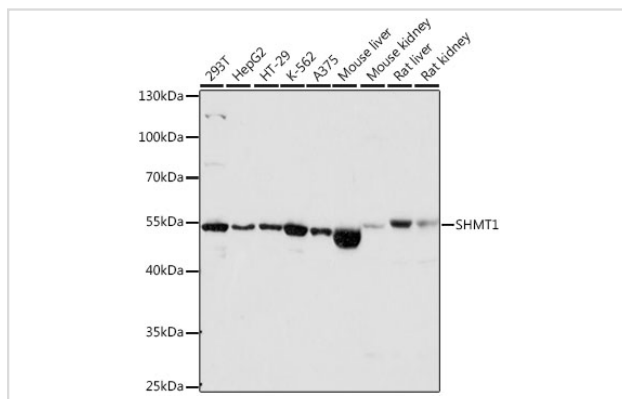
## Application Details

WB 1:500 - 1:2000IHC 1:50 - 1:200IF 1:50 - 1:200

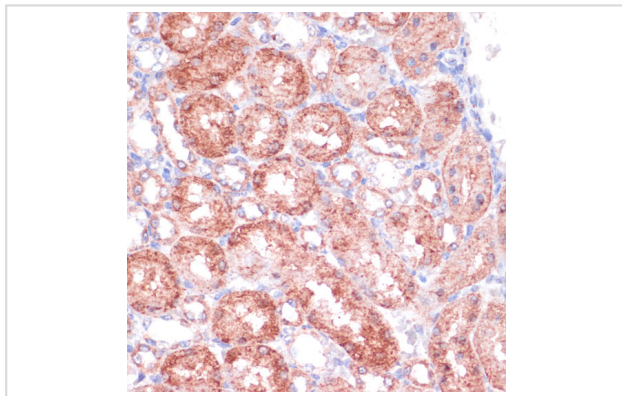
## Images



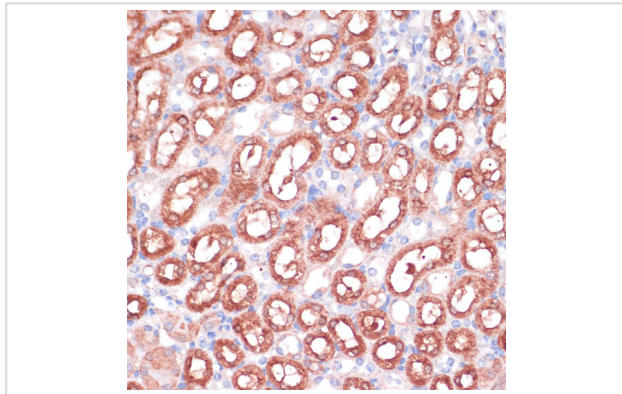
Immunofluorescence analysis of U-2 OS cells using SHMT1 at dilution of 1:100. Blue: DAPI for nuclear staining.



Western blot analysis of extracts of various cell lines, using SHMT1 at 1:1000 dilution.



Immunohistochemistry of paraffin-embedded rat kidney using SHMT1 at dilution of 1:100 (40x lens).



Immunohistochemistry of paraffin-embedded mouse kidney using SHMT1 at dilution of 1:100 (40x lens).

## Background

This gene encodes the cytosolic form of serine hydroxymethyltransferase, a pyridoxal phosphate-containing enzyme that catalyzes the reversible conversion of serine and tetrahydrofolate to glycine and 5,10-methylene tetrahydrofolate. This reaction provides one-carbon units for synthesis of methionine, thymidylate, and purines in the cytoplasm. This gene is located within the Smith-Magenis syndrome region on chromosome 17. A pseudogene of this gene is located on the short arm of chromosome 1. Alternative splicing results in multiple transcript variants.

**Note:** This product is for in vitro research use only