

# EMR1 Polyclonal Antibody

Catalog No: #27718



Package Size: #27718-1 50ul #27718-2 100ul

Orders: [order@signalwayantibody.com](mailto:order@signalwayantibody.com)  
Support: [tech@signalwayantibody.com](mailto:tech@signalwayantibody.com)

## Description

Product Name	EMR1 Polyclonal Antibody
Host Species	Rabbit
Clonality	Polyclonal
Isotype	IgG
Purification	Affinity purification
Applications	WB,IF,IHC
Species Reactivity	Human,Mouse,Rat
Immunogen Description	Recombinant fusion protein of human EMR1 (NP_001243182.1).
Other Names	ADGRE1; EMR1; TM7LN3; adhesion G protein-coupled receptor E1; F4/80
Accession No.	Swiss-Prot#:Q14246NCBI Gene ID:2015
Uniprot	Q14246
GeneID	2015;
Calculated MW	120kDa
Formulation	Avoid freeze / thaw cycles. Buffer: PBS with 50% glycerol, pH7.4.
Storage	Store at -20°C

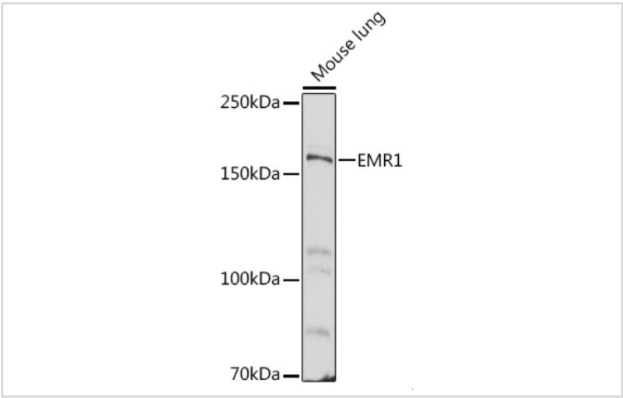
## Application Details

WB 1:500 - 1:1000

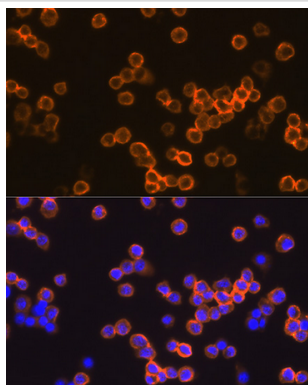
IF 1:50 - 1:200

IHC 1:50 - 1:200

## Images



Western blot analysis of extracts of Mouse lung, using EMR1 antibody at 1:500



Immunofluorescence analysis of Raw264.7 cells using EMR1 Rabbit pAb at dilution of 1:100 . Blue: DAPI for nuclear staining.

## Background

This gene encodes a protein that has a domain resembling seven transmembrane G protein-coupled hormone receptors (7TM receptors) at its C-terminus. The N-terminus of the encoded protein has six EGF-like modules, separated from the transmembrane segments by a serine/threonine-rich domain, a feature reminiscent of mucin-like, single-span, integral membrane glycoproteins with adhesive properties. Multiple alternatively spliced transcript variants encoding different isoforms have been found for this gene.

Note: This product is for in vitro research use only