

# CCDC68 antibody

Catalog No: #23155



Orders: [order@signalwayantibody.com](mailto:order@signalwayantibody.com)  
Support: [tech@signalwayantibody.com](mailto:tech@signalwayantibody.com)

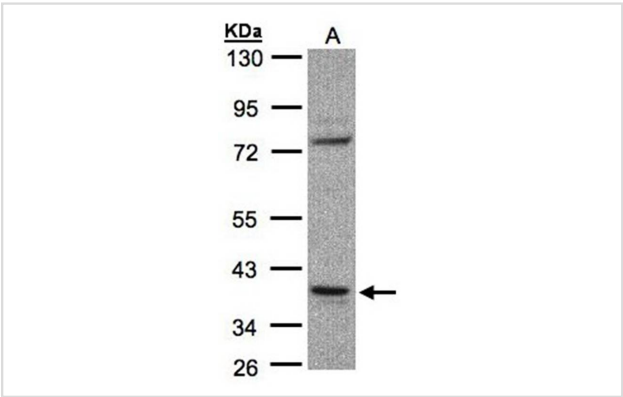
## Description

Product Name	CCDC68 antibody
Host Species	Rabbit
Clonality	Polyclonal
Purification	Purified by antigen-affinity chromatography.
Applications	WB IF
Species Reactivity	Hu
Immunogen Type	Recombinant protein
Immunogen Description	Recombinant protein fragment contain a sequence corresponding to a region within amino acids 97 and 314 of CCDC68
Target Name	CCDC68
Accession No.	Swiss-Prot:Q9H2F9Gene ID:80323
Uniprot	Q9H2F9
GeneID	80323;
Concentration	1mg/ml
Formulation	Supplied in 0.1M Tris-buffered saline with 10% Glycerol (pH7.0). 0.01% Thimerosal was added as a preservative.
Storage	Store at -20°C for long term preservation (recommended). Store at 4°C for short term use.

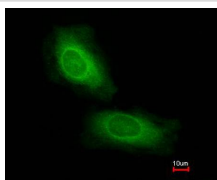
## Application Details

Predicted MW: 39kd  
Western blotting: 1:500-1:3000  
Immunofluorescence: 1:100-1:200

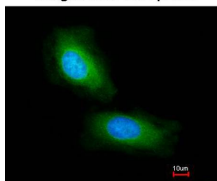
## Images



Sample(30 ug whole cell lysate)  
A: Raji  
10% SDS PAGE  
Primary antibody diluted at 1: 1000



Merged with DNA probe



Immunofluorescence analysis of paraformaldehyde-fixed HeLa, using CCDC68 antibody at 1: 200 dilution.

---

Note: This product is for in vitro research use only