

SDS Polyclonal Antibody

Catalog No: #27842



Package Size: #27842-1 50ul #27842-2 100ul

Orders: order@signalwayantibody.com
Support: tech@signalwayantibody.com

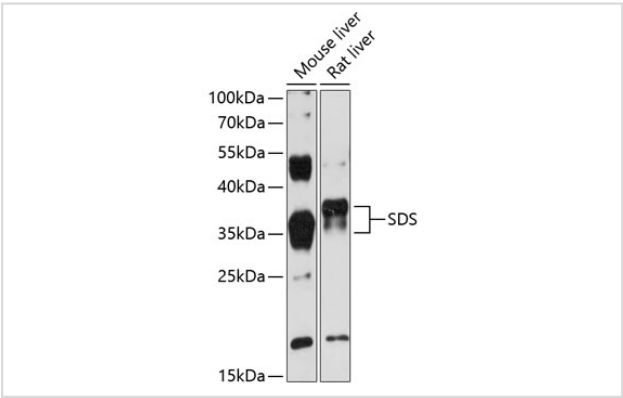
Description

Product Name	SDS Polyclonal Antibody
Host Species	Rabbit
Clonality	Polyclonal
Isotype	IgG
Purification	Affinity purification
Applications	WB
Species Reactivity	Mouse,Rat
Immunogen Description	Recombinant fusion protein of human SDS (NP_006834.2).
Other Names	SDS; SDH; serine dehydratase
Accession No.	Swiss-Prot#:P20132NCBI Gene ID:10993
Uniprot	P20132
GeneID	10993;
Calculated MW	35kDa
Formulation	Avoid freeze / thaw cycles. Buffer: PBS with 50% glycerol, pH7.4.
Storage	Store at -20°C

Application Details

WB 1:500 - 1:2000

Images



Western blot analysis of extracts of various cell lines, using SDS at 1:3000 dilution.

Background

This gene encodes one of three enzymes that are involved in metabolizing serine and glycine. L-serine dehydratase converts L-serine to pyruvate and ammonia and requires pyridoxal phosphate as a cofactor. The encoded protein can also metabolize threonine to NH₄⁺ and 2-ketobutyrate. The encoded protein is found predominantly in the liver.

Note: This product is for in vitro research use only