

TATDN1 antibody

Catalog No: #23157

Orders: order@signalwayantibody.com

Support: tech@signalwayantibody.com

Description

Product Name	TATDN1 antibody
Host Species	Rabbit
Clonality	Polyclonal
Purification	Purified by antigen-affinity chromatography.
Applications	WB IF
Species Reactivity	Hu
Immunogen Type	Recombinant protein
Immunogen Description	Recombinant protein fragment contain a sequence corresponding to a region within amino acids 1 and 169 of TATDN1
Target Name	TATDN1
Other Names	CDA11
Accession No.	Swiss-Prot:Q6P1N9Gene ID:83940
Uniprot	Q6P1N9
GeneID	83940;
Concentration	1mg/ml
Formulation	Supplied in 0.1M Tris-buffered saline with 10% Glycerol (pH7.0). 0.01% Thimerosal was added as a preservative.
Storage	Store at -20°C for long term preservation (recommended). Store at 4°C for short term use.

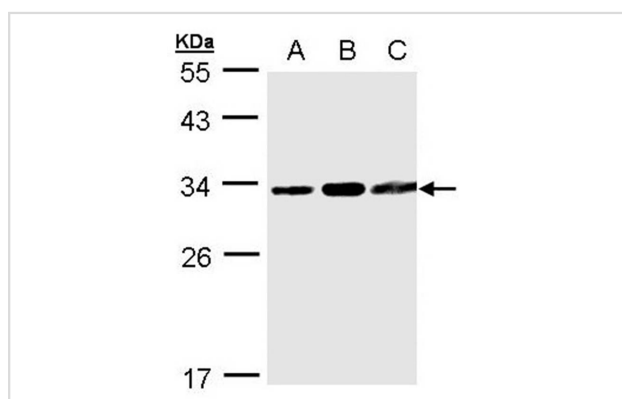
Application Details

Predicted MW: 34kd

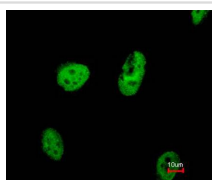
Western blotting: 1:500-1:3000

Immunofluorescence: 1:100-1:200

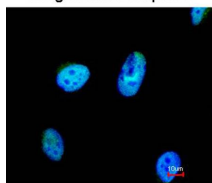
Images



Sample(30 ug whole cell lysate)
A: 293T
B: A431
C: MOLT4
12% SDS PAGE
Primary antibody diluted at 1: 1000



Merged with DNA probe



Immunofluorescence analysis of paraformaldehyde-fixed HeLa, using TATDN1 antibody at 1: 200 dilution.

Note: This product is for in vitro research use only