

PDCL Polyclonal Antibody

Catalog No: #28324

Package Size: #28324-1 50ul #28324-2 100ul

Orders: order@signalwayantibody.comSupport: tech@signalwayantibody.com

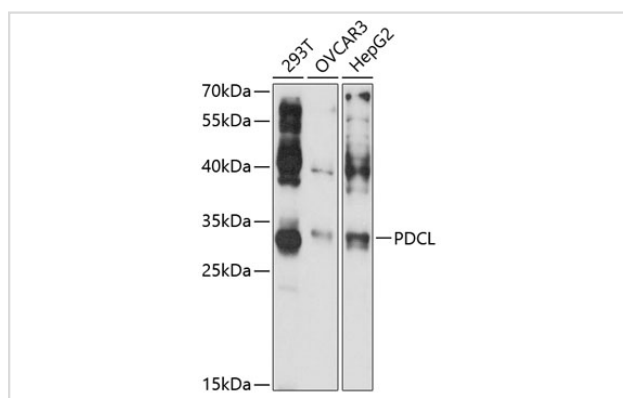
Description

Product Name	PDCL Polyclonal Antibody
Host Species	Rabbit
Clonality	Polyclonal
Isotype	IgG
Purification	Affinity purification
Applications	WB
Species Reactivity	Human
Immunogen Description	Recombinant fusion protein of human PDCL (NP_005379.3).
Other Names	PDCL; PhLP; phosducin like
Accession No.	Swiss-Prot#:Q13371NCBI Gene ID:5082
Uniprot	Q13371
GeneID	5082;
Calculated MW	34kDa
Formulation	Avoid freeze / thaw cycles. Buffer: PBS with 50% glycerol, pH7.4.
Storage	Store at -20°C

Application Details

WB 1:500 - 1:2000

Images



Western blot analysis of extracts of various cell lines, using PDCL at 1:3000 dilution.

Background

Phosducin-like protein is a putative modulator of heterotrimeric G proteins. The protein shares extensive amino acid sequence homology with phosducin, a phosphoprotein expressed in retina and pineal gland. Both phosducin-like protein and phosphoducin have been shown to regulate G-protein signaling by binding to the beta-gamma subunits of G proteins.

Note: This product is for in vitro research use only