

# CD300LF Polyclonal Antibody

Catalog No: #28369



Package Size: #28369-1 50ul #28369-2 100ul

Orders: [order@signalwayantibody.com](mailto:order@signalwayantibody.com)  
Support: [tech@signalwayantibody.com](mailto:tech@signalwayantibody.com)

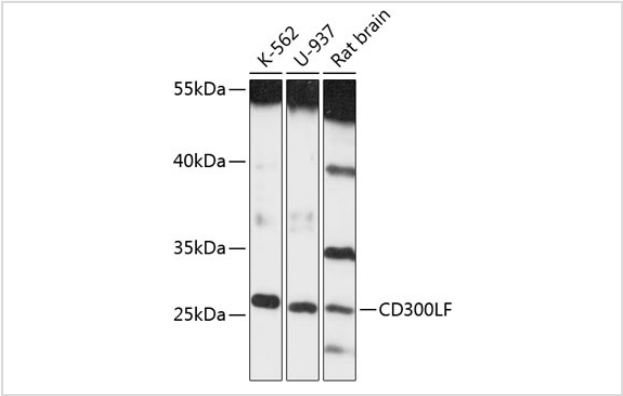
## Description

Product Name	CD300LF Polyclonal Antibody
Host Species	Rabbit
Clonality	Polyclonal
Isotype	IgG
Purification	Affinity purification
Applications	WB
Species Reactivity	Human,Mouse,Rat
Immunogen Description	Recombinant fusion protein of human CD300LF (NP_001276011.1).
Other Names	CD300LF; CD300f; CLM-1; CLM1; IREM-1; IREM1; IgSF13; LMIR3; NKIR; CMRF35-like molecule 1
Accession No.	Swiss-Prot#:Q8TDQ1NCBI Gene ID:146722
Uniprot	Q8TDQ1
GeneID	146722;
Calculated MW	27kDa
SDS-PAGE MW	32KD
Formulation	Avoid freeze / thaw cycles. Buffer: PBS with 50% glycerol, pH7.4.
Storage	Store at -20°C

## Application Details

WB 1:500 - 1:2000

## Images



Western blot analysis of extracts of various cell lines, using CD300LF at 1:3000 dilution.

## Background

This gene encodes a member of the CD300 protein family. Members of this family are cell surface glycoproteins with a single IgV-like extracellular domain, and are involved in the regulation of immune response. The encoded protein is an inhibitory receptor. Alternative splicing results in multiple transcript variants.

---

Note: This product is for in vitro research use only