

GUCY2F Polyclonal Antibody

Catalog No: #28464



Package Size: #28464-1 50ul #28464-2 100ul

Orders: order@signalwayantibody.com
Support: tech@signalwayantibody.com

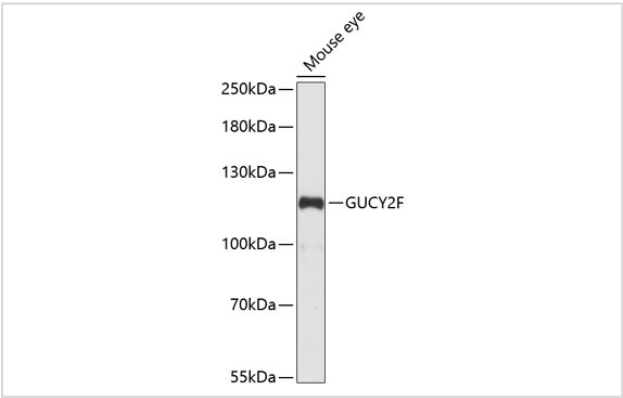
Description

Product Name	GUCY2F Polyclonal Antibody
Host Species	Rabbit
Clonality	Polyclonal
Isotype	IgG
Purification	Affinity purification
Applications	WB,IF
Species Reactivity	Mouse,Rat
Immunogen Description	Recombinant fusion protein of human GUCY2F (NP_001513.2).
Other Names	GUCY2F; CYGF; GC-F; GUC2DL; GUC2F; RETGC-2; ROS-GC2; retinal guanylyl cyclase 2
Accession No.	Swiss-Prot#:P51841NCBI Gene ID:2986
Uniprot	P51841
GeneID	2986;
Calculated MW	125kDa
Formulation	Avoid freeze / thaw cycles. Buffer: PBS with 50% glycerol, pH7.4.
Storage	Store at -20°C

Application Details

WB 1:500 - 1:2000IF 1:50 - 1:100

Images



Western blot analysis of extracts of mouse eye, using GUCY2F at 1:1000 dilution.

Background

The protein encoded by this gene is a guanylyl cyclase found predominantly in photoreceptors in the retina. The encoded protein is thought to be involved in resynthesis of cGMP after light activation of the visual signal transduction cascade, allowing a return to the dark state. This protein is a single-pass type I membrane protein. Defects in this gene may be a cause of X-linked retinitis pigmentosa.

Note: This product is for in vitro research use only