

KRBOX4 Polyclonal Antibody

Catalog No: #28609



Package Size: #28609-1 50ul #28609-2 100ul

Orders: order@signalwayantibody.com
Support: tech@signalwayantibody.com

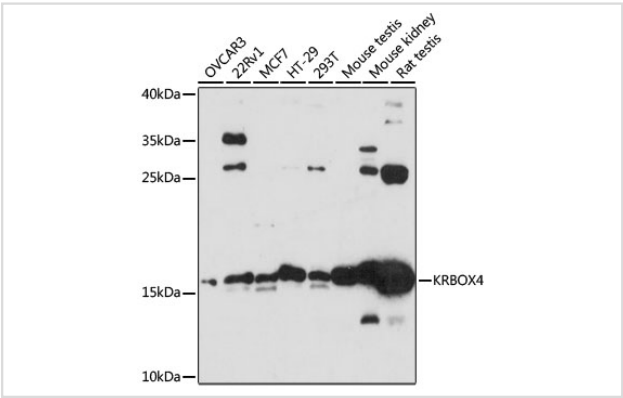
Description

Product Name	KRBOX4 Polyclonal Antibody
Host Species	Rabbit
Clonality	Polyclonal
Isotype	IgG
Purification	Affinity purification
Applications	WB
Species Reactivity	Human,Mouse,Rat
Immunogen Description	A synthetic synthetic peptide of human KRBOX4 (NP_060246.2).
Other Names	KRBOX4; ZNF673; KRAB box domain containing 4
Accession No.	Swiss-Prot#:Q5JUW0NCBI Gene ID:55634
Uniprot	Q5JUW0
GeneID	55634;
Calculated MW	20kDa
Formulation	Avoid freeze / thaw cycles. Buffer: PBS with 50% glycerol, pH7.4.
Storage	Store at -20°C

Application Details

WB 1:500 - 1:2000

Images



Western blot analysis of extracts of various cell lines, using KRBOX4 at 1:3000 dilution.

Background

This encodes a zinc finger protein with an N-terminal KRAB (Kruppel-associated) domain found in transcriptional repressors. This gene is located in a region of the X chromosome thought to be involved in nonsyndromic X-linked mental retardation. Multiple transcript variants encoding different isoforms have been found for this gene.

Note: This product is for in vitro research use only