

# WASF1 Polyclonal Antibody

Catalog No: #28651



Package Size: #28651-1 50ul #28651-2 100ul

Orders: [order@signalwayantibody.com](mailto:order@signalwayantibody.com)  
Support: [tech@signalwayantibody.com](mailto:tech@signalwayantibody.com)

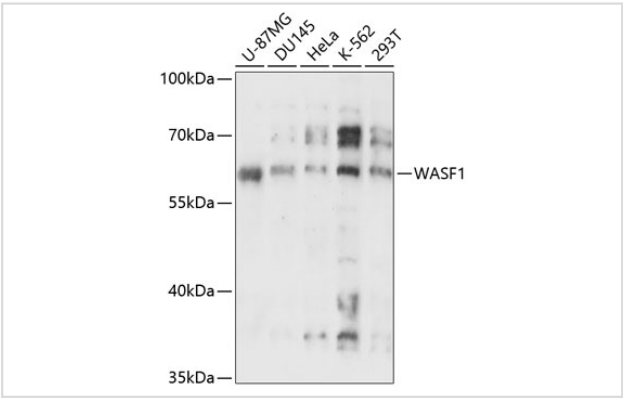
## Description

Product Name	WASF1 Polyclonal Antibody
Host Species	Rabbit
Clonality	Polyclonal
Isotype	IgG
Purification	Affinity purification
Applications	WB
Species Reactivity	Human
Immunogen Description	A synthetic synthetic peptide of human WASF1 (NP_001020107.1).
Other Names	WASF1; SCAR1; WAVE; WAVE1; WAS protein family member 1
Accession No.	Swiss-Prot#:Q92558NCBI Gene ID:8936
Uniprot	Q92558
GeneID	8936;
Calculated MW	62kDa
Formulation	Avoid freeze / thaw cycles. Buffer: PBS with 50% glycerol, pH7.4.
Storage	Store at -20°C

## Application Details

WB 1:500 - 1:2000

## Images



Western blot analysis of extracts of various cell lines, using WASF1 at 1:3000 dilution.

## Background

The protein encoded by this gene, a member of the Wiskott-Aldrich syndrome protein (WASP)-family, plays a critical role downstream of Rac, a Rho-family small GTPase, in regulating the actin cytoskeleton required for membrane ruffling. It has been shown to associate with an actin nucleation core Arp2/3 complex while enhancing actin polymerization in vitro. Wiskott-Aldrich syndrome is a disease of the immune system, likely due to defects in regulation of actin cytoskeleton. Multiple alternatively spliced transcript variants encoding the same protein have been found for this gene.

---

Note: This product is for in vitro research use only